



## Gironde Road, SW6

£625 Per week

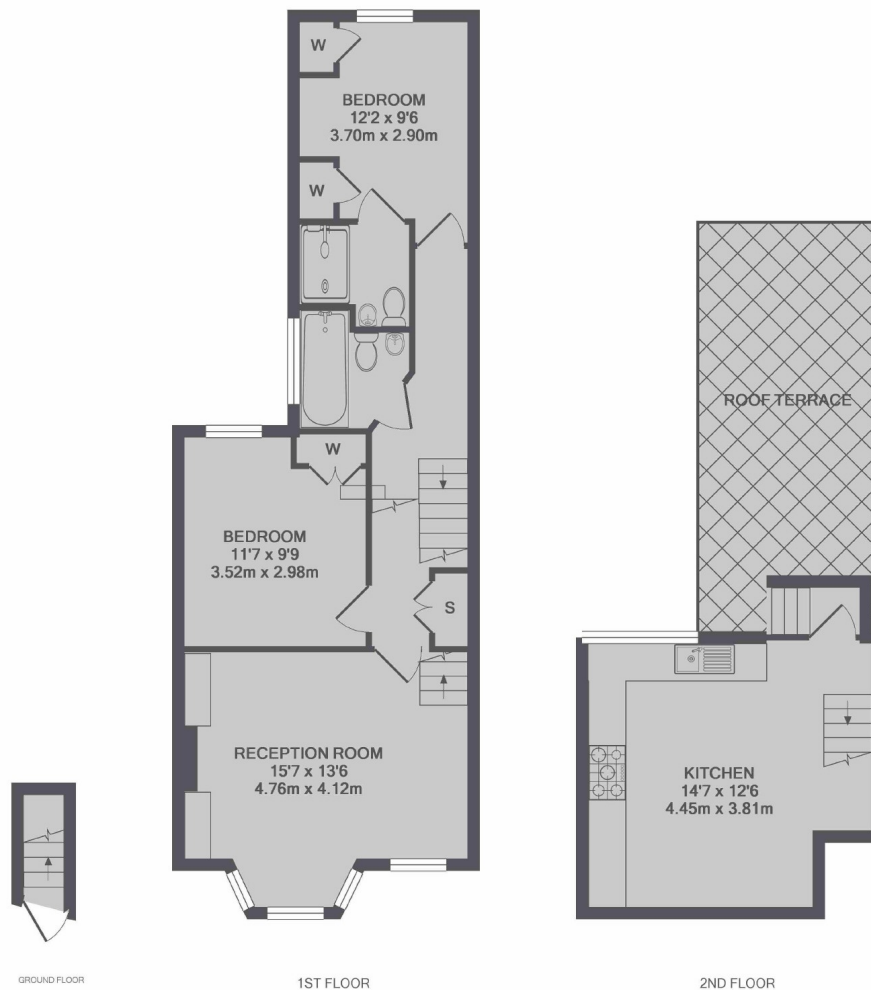
A well presented and spacious two double bedroom, two bathroom split level Victorian conversion apartment, which also benefits from a private roof terrace.

Located just off Fulham Broadway with a wide choice of restaurants and shops including the Waitrose supermarket, Wholefoods and Del' Aziz coffee shop.

### Features

- Two Double Bedrooms
- Private Roof Terrace
- Two Bathrooms
- Mezzanine Kitchen Area
- Split Level Conversion
- Fulham Broadway Station

## Gironde Road, London, SW6



TOTAL APPROX. FLOOR AREA 829 SQ.FT. (77.0 SQ.M.)

### Contact

To arrange a viewing call our office on the number below or visit our website.



Energy Rating: D. We aim to make our particulars both accurate and reliable. However they are not guaranteed; nor do they form part of an offer or contract. If you require clarification on any points then please contact us, especially if you're traveling some distance to view. Please note that appliances and heating systems have not been tested and therefore no warranties can be given as to their good working order.