



Central Avenue, SW6

£1,000,000

An immaculate two double bedroom apartment set in the desirable Fulham Riverside development, which benefits from landscaped communal gardens and 24-hour concierge.

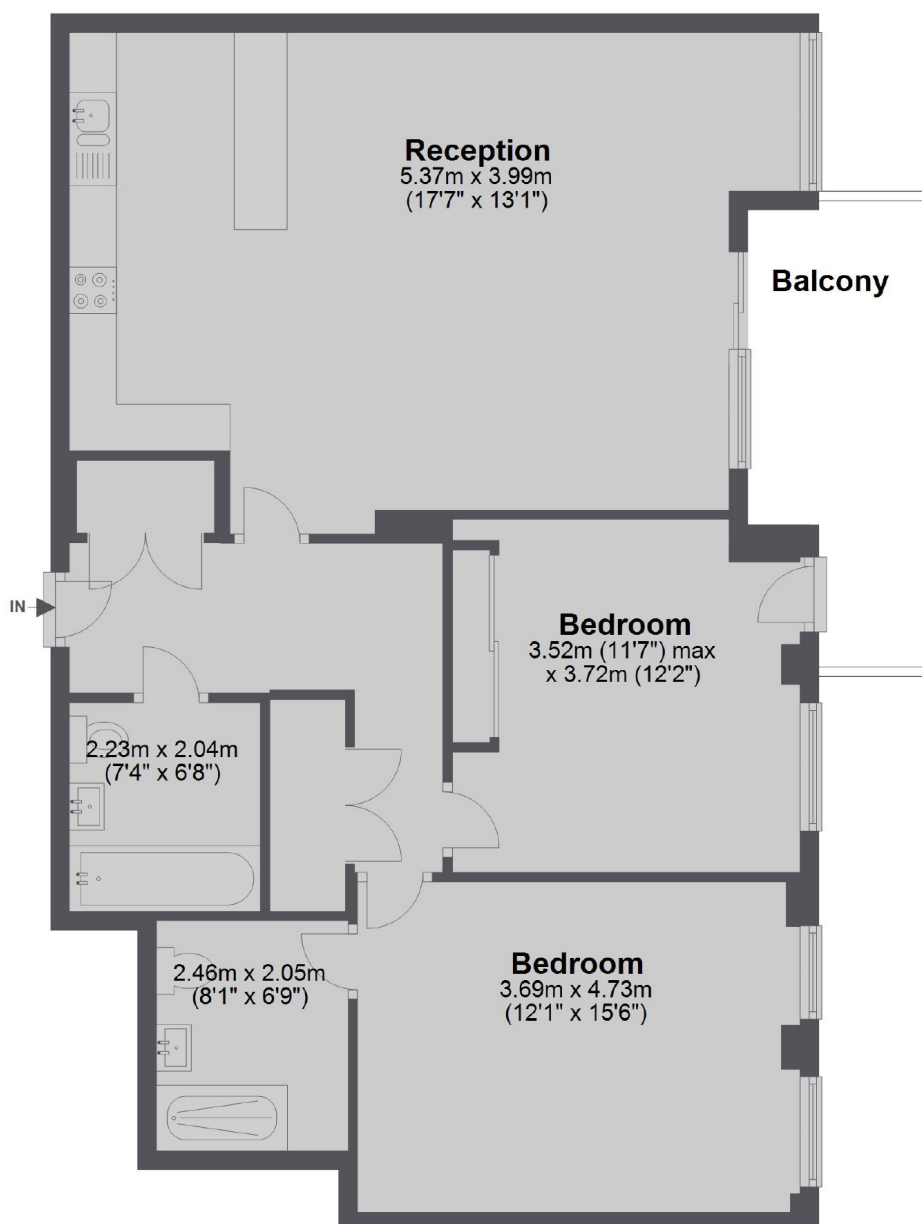
Fulham Riverside is perfectly located between South Park and Imperial Park, moments away from amenities such as Sainsburys, local cafés and restaurants and the prestigious Hurlingham Club.

Features

- Two Double Bedrooms
- Two Bathrooms
- Riverside Development
- Private Gym
- Secure Parking Separate
- 24-Hour Concierge

Central Avenue, London, SW6

Fifth Floor



Total area: approx. 91.5 sq. metres (984.5 sq. feet)