



Holmead Road, SW6

£1,961 Per week

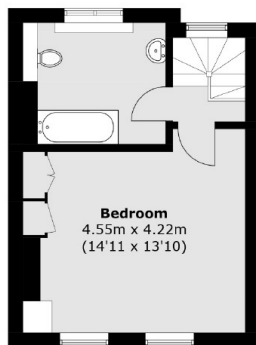
A four bedroom house in a prime residential street on the Kings Road. This house benefits from a large open plan kitchen/ reception space as well as, four double bedrooms and four bathrooms.

Holmead Road is ideally located in between the popular Kings Road and Fulham Road with transport links and amenities on its doorstep.

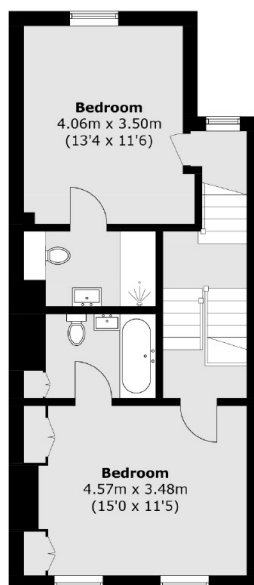
Features

- Four Double Bedrooms
- Four Bathrooms
- Incredible Master Suite
- Feature Fireplace
- Private Garden
- Prime Location

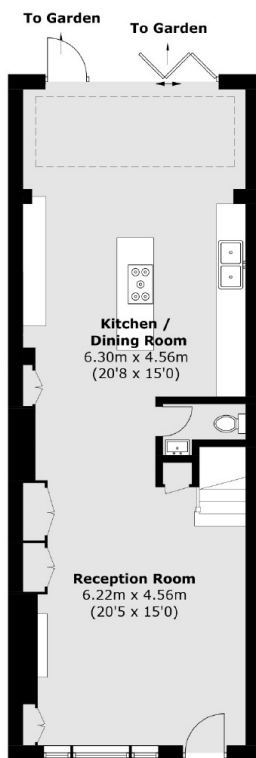
Holmead Road, London, SW6



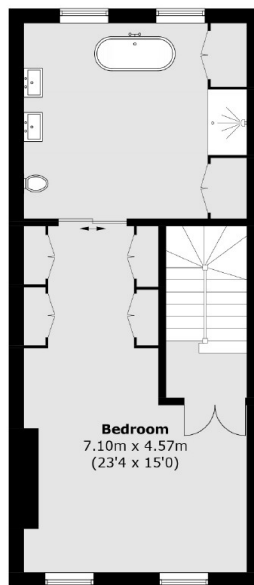
Third Floor



Second Floor



Ground Floor



First Floor

Total area (approx.): 190.4 sq. m (2,049.3 sq. ft)