



Niton Street, SW6

£830,000

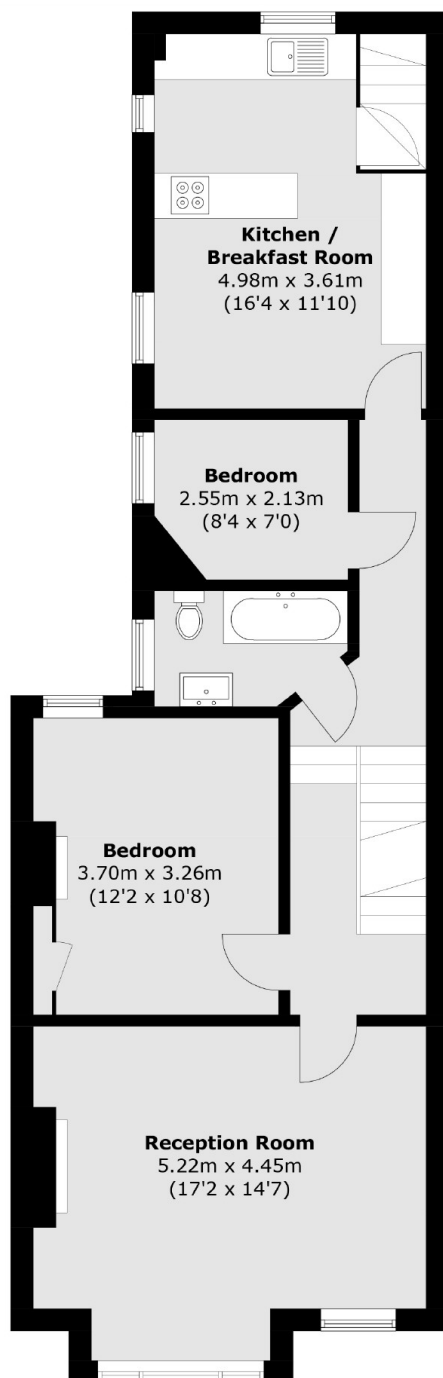
A wonderfully bright and perfectly arranged three bedroom, two bathroom, split-level Victorian conversion flat with a private south facing garden. The property spans over 1,100 sq ft and is being sold with the freehold and no onward chain.

Niton Street is a quiet residential road located in the popular Alphabet Streets which runs perpendicular off Fulham Palace Road. There is easy access to Bishops Park itself as well to the Thames Path running along the River.

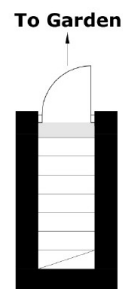
Features

- First Floor
- Freehold
- Private South Facing Garden
- Split Level
- Potential To Extend (STPP)
- The Alphabets

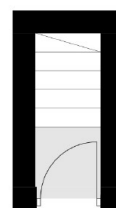
Niton Street, London, SW6



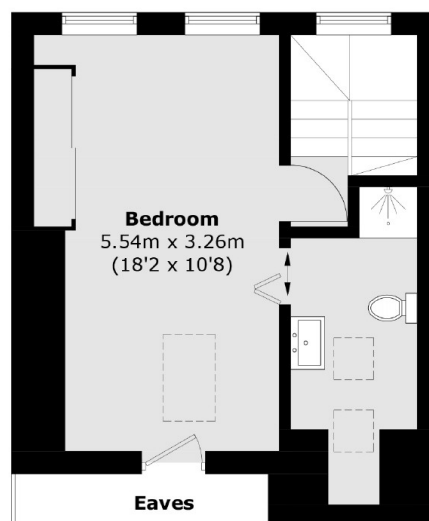
First Floor



Ground Floor



Ground Floor



Second Floor

Total area (approx.): 108.4 sq. m (1,166.7 sq. ft)
(Excluding Eaves)

Dexters

Fulham
569 Fulham Road
London
SW6 1ES
Sales
020 7386 5386

Energy Rating: E. We aim to make our particulars both accurate and reliable. However they are not guaranteed; nor do they form part of an offer or contract. If you require clarification on any points then please contact us, especially if you're traveling some distance to view. Please note that appliances and heating systems have not been tested and therefore no warranties can be given as to their good working order.

RICS Regulated
Estate Agent
and Letting Agent

dexters.co.uk