



Queenstown Road, SW11

£3,250 Per calendar month

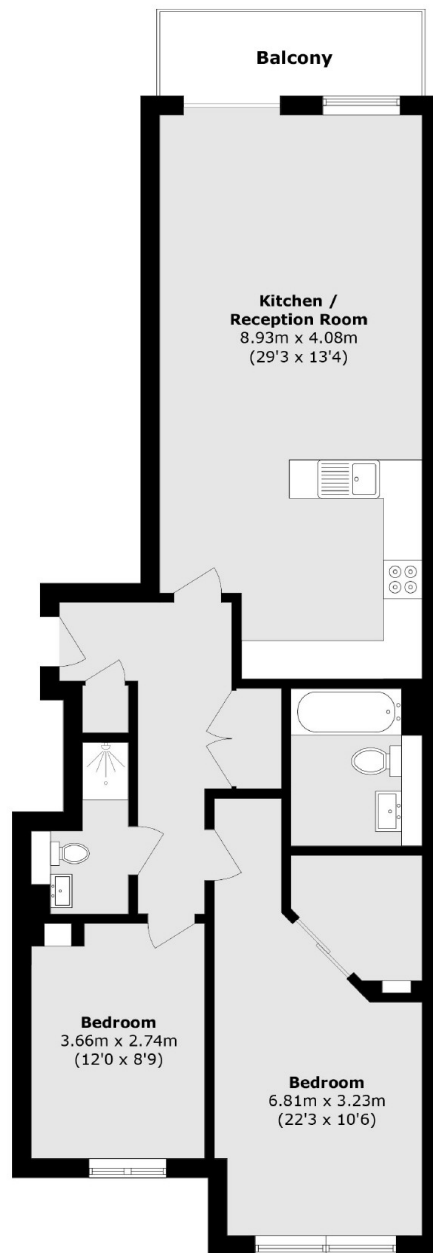
A two double bedroom, two bathroom apartment within this luxury development. The property has a balcony overlooking the piazza and benefits from river views, concierge and local shop.

Situated just off the river in this modern development. There is an on site shop, Battersea Park is just over the road and Chelsea / Sloane square less than a mile away.

Features

- Two Double Bedrooms
- Two Bathrooms
- Luxury Apartment
- Concierge
- Private Balcony
- On Site Shop

Queenstown Road, London, SW11



Total area (approx.): 84.8 sq. m (912.8 sq. ft)

Balcony area (approx.): 5.50 sq. m (59.2 sq. ft)

Dexters

Battersea
174A Lavender Hill
London
SW11 5TG
Lettings
020 7350 1300

Energy Rating: . We aim to make our particulars both accurate and reliable. However they are not guaranteed; nor do they form part of an offer or contract. If you require clarification on any points then please contact us, especially if you're traveling some distance to view. Please note that appliances and heating systems have not been tested and therefore no warranties can be given as to their good working order.

 **RICS** | Regulated
Estate Agent
and Letting Agent

[dexters.co.uk](https://www.dexters.co.uk)