



## Twickenham Road, TW11

### £849,950

Located on the bank of the River Thames, it does not get better than this. This beautiful apartment offering in excess of a 1000sq ft this property in immaculate condition it is a must view.

Stoneydean is just off Twickenham Road. Teddington mainline station and Teddington high street with its array of local shops, bars and restaurants is only half a mile away.

### Features

- Riverside
- Three Bedrooms
- Garage
- Two Bath/Shower Rooms
- Immaculate Presentation
- Communal Gardens





## Twickenham Road, TW11

Situated on the first floor, the entrance leads into the hallway. The spacious reception room is 19ft and has floor to ceiling windows with views over the communal gardens, this room is lovely and bright with a wooden floor and plenty of space for living and dining.

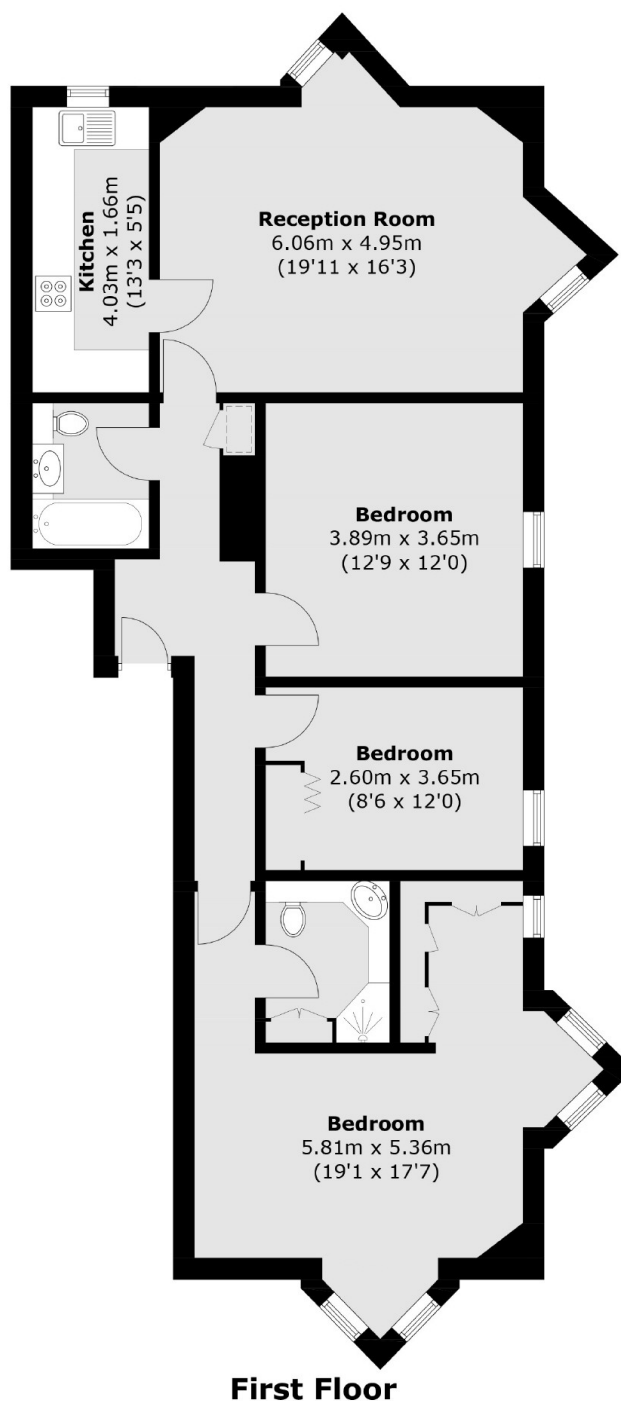
There are three double bedrooms, the master with a river view along with an en suite shower room and walk-in wardrobe. In addition all the bedrooms have fitted storage and there is a further family bathroom.

There is garage along with wonderful communal gardens lining the banks of the River Thames.





# Twickenham Road, Teddington, TW11



Total area (approx.): 96.3 sq. m (1,036.6 sq. ft)

## Dexters

Teddington  
61 High Street  
Teddington  
TW11 8HA

Sales  
020 8288 8288

Energy Rating: C. We aim to make our particulars both accurate and reliable. However they are not guaranteed; nor do they form part of an offer or contract. If you require clarification on any points then please contact us, especially if you're traveling some distance to view. Please note that appliances and heating systems have not been tested and therefore no warranties can be given as to their good working order.

 **RICS** | Regulated  
Estate Agent  
and Letting Agent

[dexters.co.uk](https://www.dexters.co.uk)