



Lion Wharf Road, TW7

£1,795 Per calendar month

Dexters



Lion Wharf Road, TW7

A stylish one bedroom apartment located within a riverside development. This executive apartment features a spacious living room complemented by a large balcony with dual access points, offering stunning views of the surrounding area. The modern bathroom is tastefully designed and the apartment benefits from ample storage throughout.

Additional highlights include a secure underground parking space providing added convenience and peace of mind. Perfectly suited for those seeking luxury living in an enviable location.

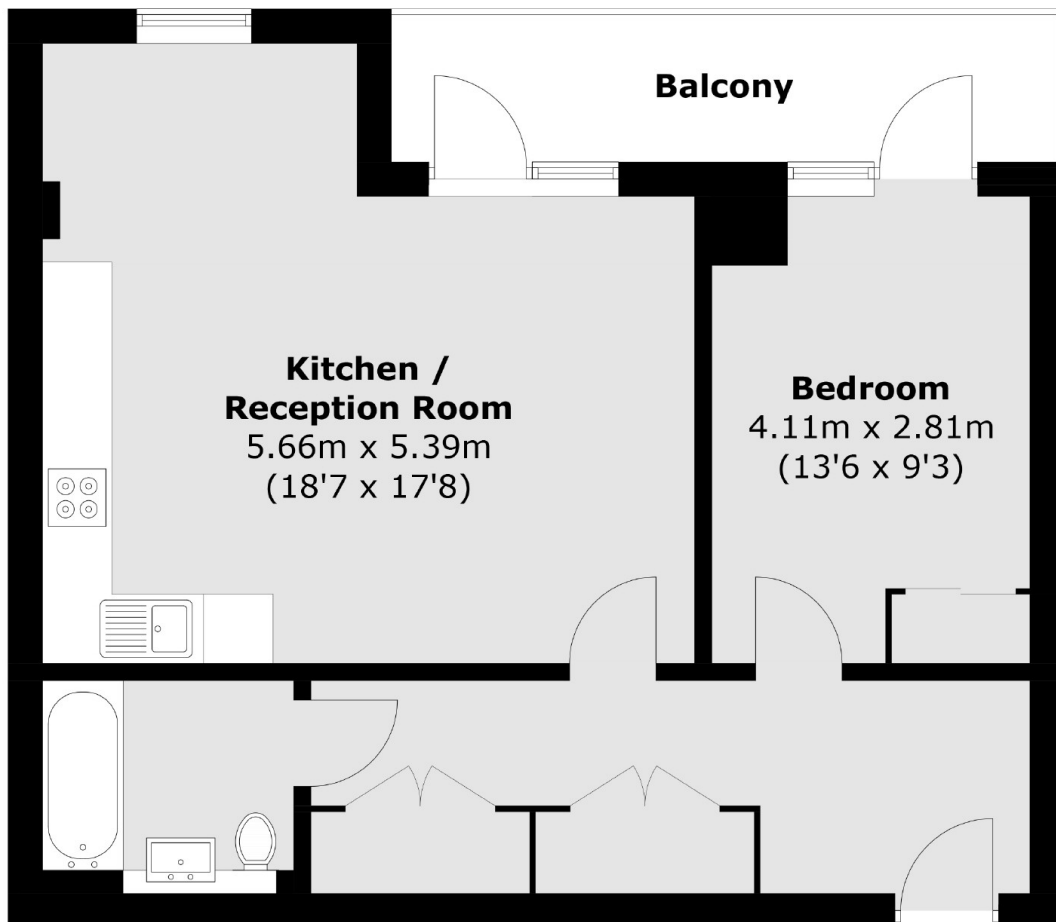
Lion Wharf sits on the river with tow path walks to Richmond and St Margarets village. South Street's popular cafés and restaurants are 500 feet away. Richmond's fast overground rail service with its links into London Waterloo.

Features

- Riverside Development
- Large Open-Plan Living
- One Double Bedroom
- Luxury Bathroom
- Balcony
- Allocated Parking



Lion Wharf Road,
Isleworth, TW7



Total area (approx.): 56.1 sq. m (603.9 sq. ft)
Balcony: 7.4 sq. m (79.6 sq. ft)

Dexters

St Margarets
1 Chertsey Road
St Margarets
TW1 1LR
Lettings
020 8744 9700

Energy Rating: B. We aim to make our particulars both accurate and reliable. However they are not guaranteed; nor do they form part of an offer or contract. If you require clarification on any points then please contact us, especially if you're traveling some distance to view. Please note that appliances and heating systems have not been tested and therefore no warranties can be given as to their good working order.

 **RICS** | Regulated
Estate Agent
and Letting Agent

dexters.co.uk