

## Lion Wharf Road, TW7

£1,750 Per calendar month

A stylish one bedroom apartment located within a riverside development. This executive apartment features a spacious living room complemented by a private balcony and offering stunning views of the surrounding area. The modern bathroom is tastefully designed and the apartment benefits from ample storage throughout. Additional highlights include a secure underground parking space, providing added convenience and peace of mind. Perfectly suited for those seeking luxury living in an enviable location.

Lion Wharf sits on the river with tow path walks to Richmond and St Margarets village. South streets popular cafés and restaurants are 500 feet away. Richmond's fast over ground rail service with its links into London Waterloo and District Line is within 1.4 miles.

### Features

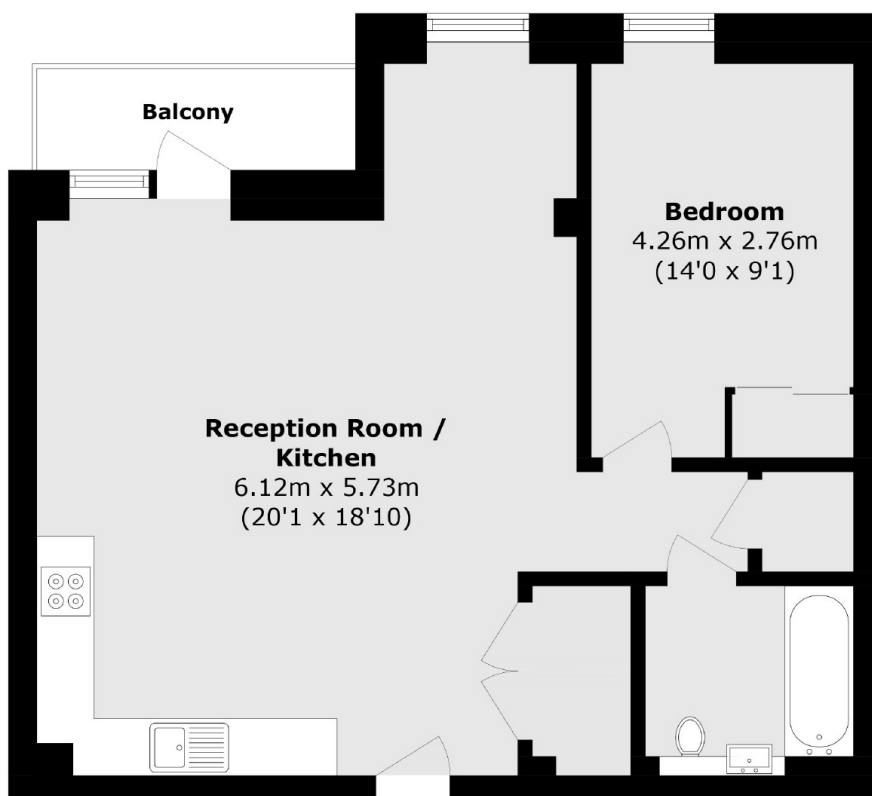
Riverside Development

Private Balcony

Luxury Bathroom

Ample Storage

# Lion Wharf Road, Isleworth, TW7



Total area (approx.): 60.3 sq. m (649.0 sq. ft)

Balcony area (approx.): 3.8 sq. m (40.9 sq. ft)