



## Lion Wharf Road, TW7

£2,850 Per calendar month

An executive ground floor apartment finished to the highest standard, offering an impressive private terrace with breathtaking River Thames views. The property features a spacious open-plan reception room, two double bedrooms, two luxury bathrooms and allocated parking. Perfect for entertaining and enjoying a premier riverside lifestyle.

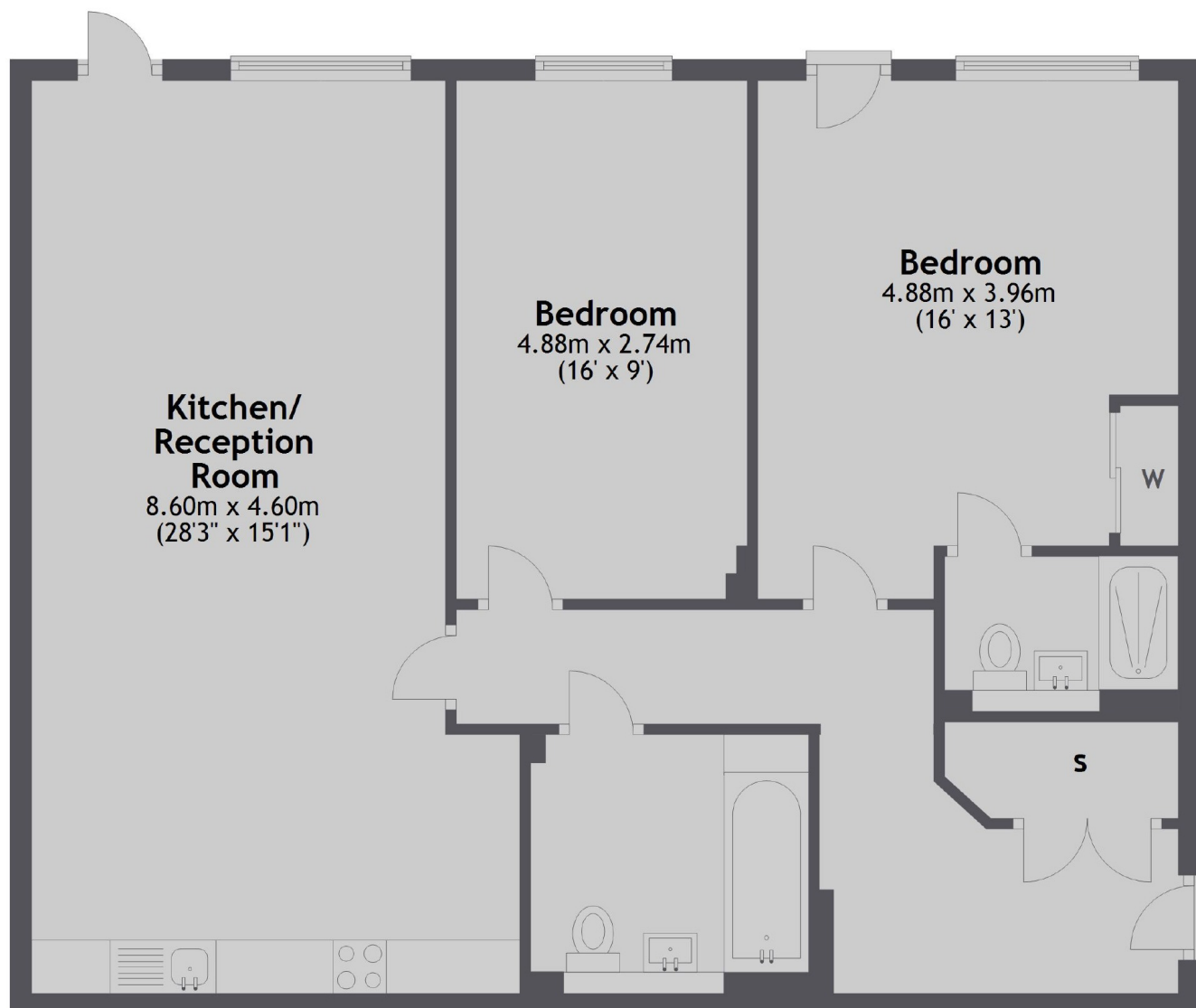
Lion Wharf sits on the river with tow path walks to Richmond and St Margarets village. South Street's popular cafés and restaurants are 500 feet away. Richmond's fast over ground rail service with its links into London Waterloo and District Line is within 1.4 miles.

### Features

- River Views
- Open-Plan Reception Room
- Two Double Bedrooms
- Two Bathrooms
- Allocated Parking
- Private Terrace

# Lion Wharf Road, Isleworth, TW7

## Ground Floor



Total area: approx. 92.9 sq. metres (999.4 sq. feet)

# Dexters

St Margarets  
1 Chertsey Road  
St Margarets  
TW1 1LR  
Lettings  
020 8744 9700

Energy Rating: . We aim to make our particulars both accurate and reliable. However they are not guaranteed; nor do they form part of an offer or contract. If you require clarification on any points then please contact us, especially if you're traveling some distance to view. Please note that appliances and heating systems have not been tested and therefore no warranties can be given as to their good working order.

**RICS** Regulated  
Estate Agent  
and Letting Agent

dexters.co.uk