



Martineau Drive, TW1

£9,000 Per calendar month

Dexters



Martineau Drive, TW1

This beautiful six bedroom home is presented to an impeccable standard throughout and offers well balanced and contemporary living space. Situated in a gated development 400ft from the River Thames.

The property opens up with an impressive entrance hallway that has storage for shoes and coats and leads onto a staircase down to the lower ground floor. There you will find a modern open plan kitchen that has space for dining and access to the utility room, downstairs WC, garage with basement storage and the beautifully maintained rear garden.

To the upper ground floor there are two reception rooms, the larger of the two with an additional roof terrace overlooking the garden. A short staircase then leads to the first floor which has three bedrooms, two of which have en-suite bathrooms and there is an additional WC.

The top floor has three further double bedrooms and a four piece family bathroom. The impressive property has access to off street parking and the back of the development leads through to the River Thames.

St. Margaret's high street with its boutique cafés and shops is 0.7 miles away and St. Margaret's Station that has direct links to London Waterloo is 0.8 miles away.

Features

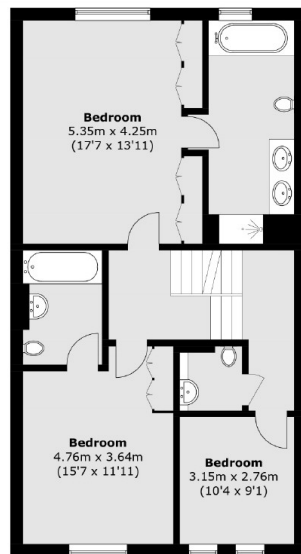
- Six Bedrooms
- Gated Development
- Access to River Thames
- Garage
- Off Street Parking
- Three Bathrooms



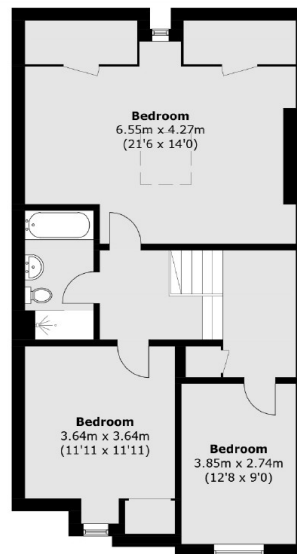




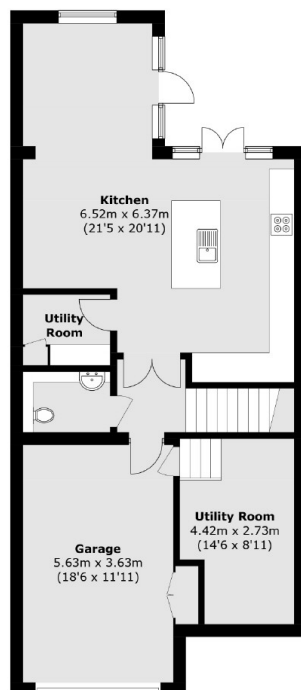
Martineau Drive, Twickenham, TW1



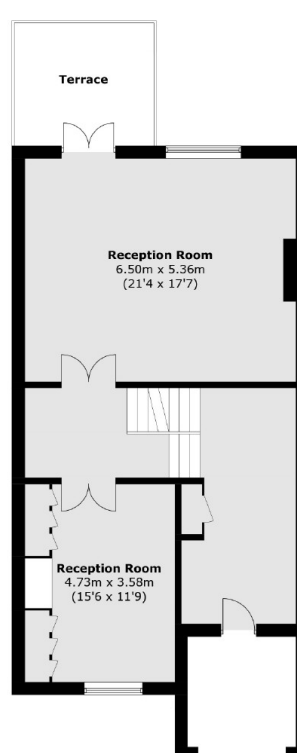
First Floor



Second Floor



Lower Ground Floor



Ground Floor

Total area (approx.): 326 sq. m (3,507.9 sq. ft)
(Including Garage)
Terrace: 9.9 sq. m (106.5 sq. ft)