



Clevedon Road, TW1

£3,595 Per calendar month

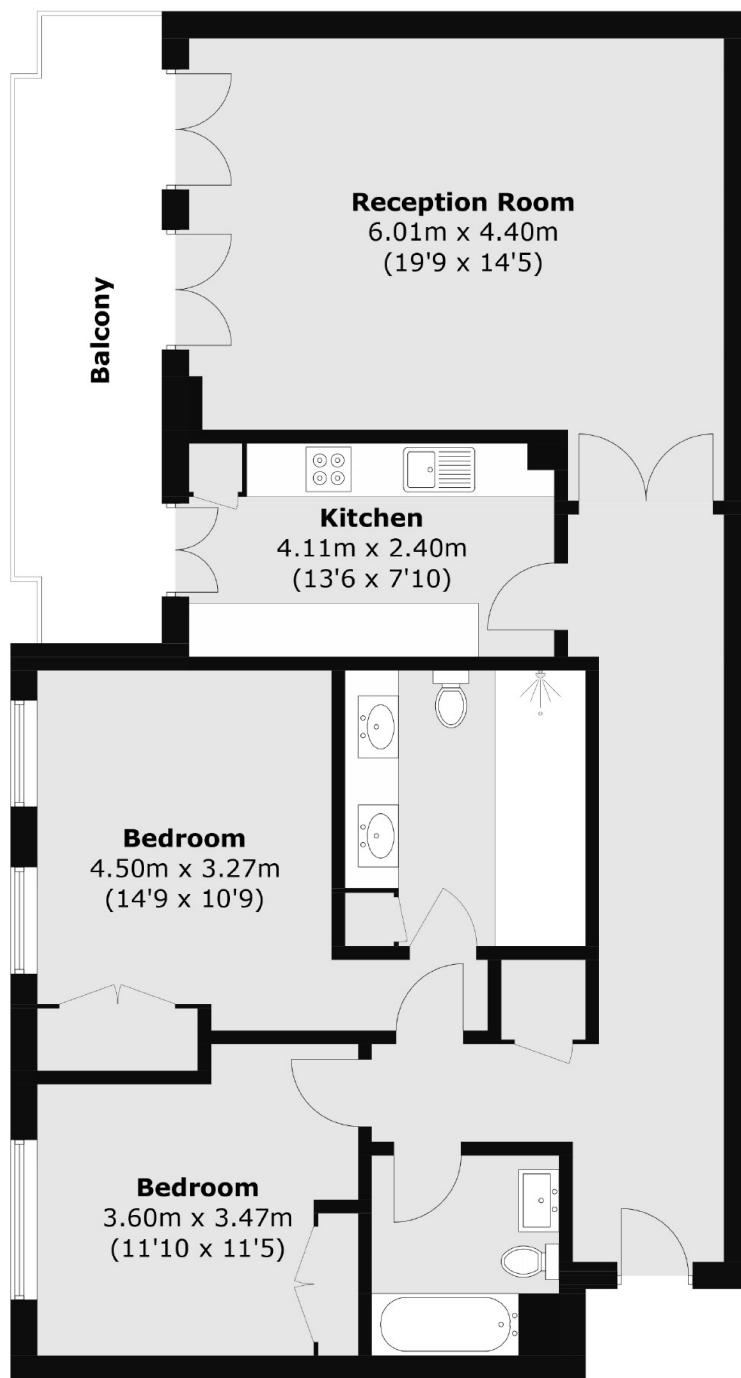
A beautifully presented executive two double bedroom apartment set within an exclusive riverside development on the River Thames, offering a private balcony and stylish interiors throughout. The property features two contemporary bathrooms, elegant wood flooring and well-proportioned living space ideal for modern living. Residents benefit from secure underground parking, a 24-hour concierge service and access to a fully equipped gym.

Moments from the River Thames and just a short walk from Richmond town centre, the property is ideally positioned for an excellent selection of shops, cafés and restaurants. Richmond and St. Margarets stations are both within easy reach, providing transport links into Central London. The area is also well regarded for its outstanding local schools, making it highly desirable for families and professionals alike.

Features

- 24 Hour Concierge
- Residents Gym
- Two Double Bedrooms
- Two Bathrooms
- Private Balcony

Clevedon Road, Twickenham, TW1



Total area (approx.): 100.6 sq. m (1082.8 sq. ft)
Balcony : 11.6 sq. m (124.9 sq. ft)