



## Levett Square, TW9

### £499,950

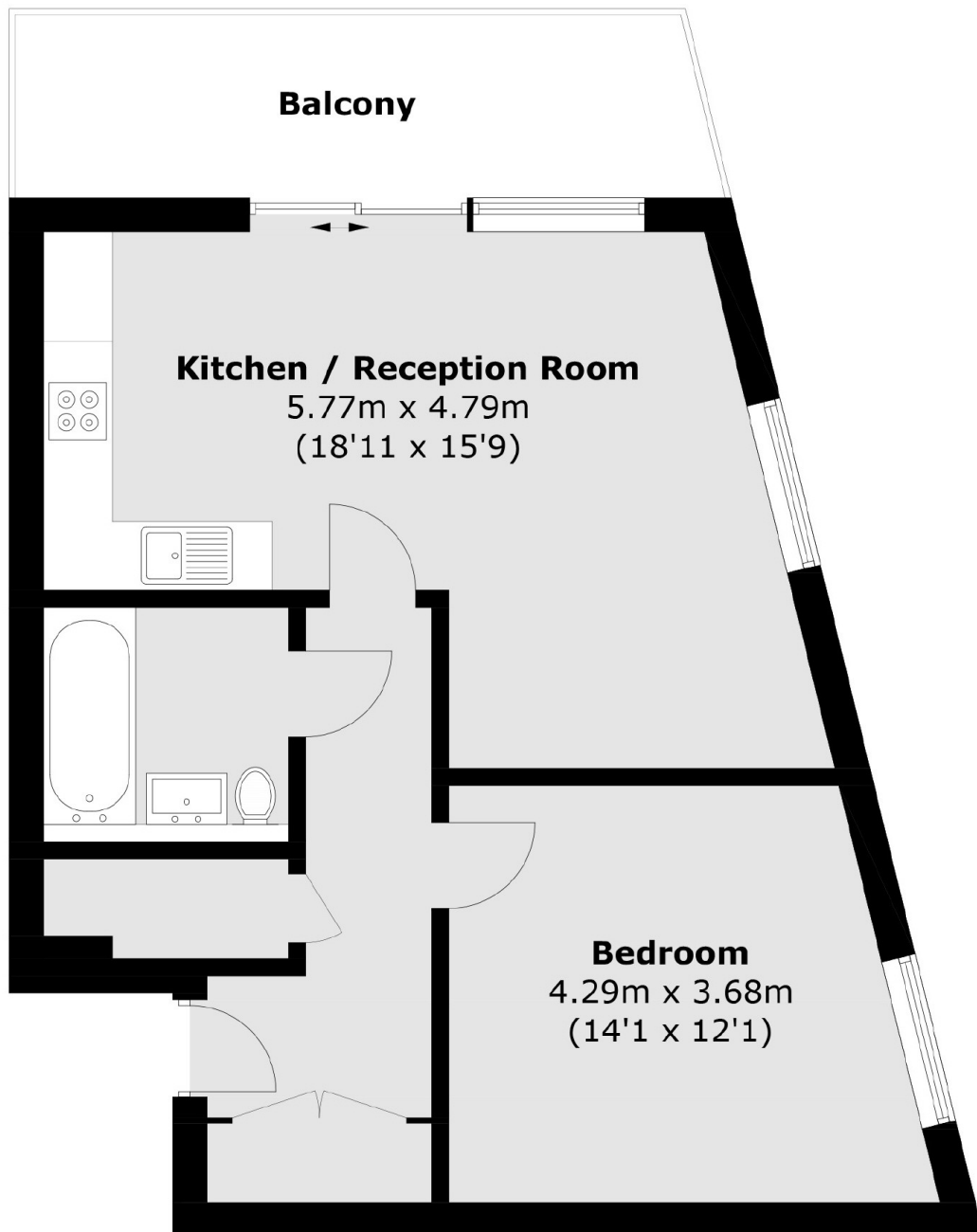
Built by Taylor Wimpey in 2018 is this stunning purpose built apartment offering just shy of 600 sq ft of accommodation. The property has a modern and contemporary styled decorative finish, suitable for first time buyers or young families looking for something turn key.

Levett Square is a recently built sought after residential development set within communal grounds and benefitting from a 24/7 on-site concierge service. Located within easy reach of the local village shopping amenities, Thames Path, Kew Retail Park, Kew Gardens Station providing District Line and Overground services.

### Features

- One Double Bedroom
- Spacious Reception Room
- Open Plan Fitted Kitchen
- One Bathroom
- 24/7 Concierge
- Underground Parking

# Levett Square, Kew, TW9



Total area (approx.) : 55.0 sq. m (592.0 sq. ft)  
Balcony : 9.6 sq. m (103.3 sq. ft)

## Dexters

Richmond  
1 Sheen Road  
Richmond  
TW9 1AD  
Sales  
020 8288 9988

Energy Rating: B. We aim to make our particulars both accurate and reliable. However they are not guaranteed; nor do they form part of an offer or contract. If you require clarification on any points then please contact us, especially if you're traveling some distance to view. Please note that appliances and heating systems have not been tested and therefore no warranties can be given as to their good working order.

 **RICS** | Regulated  
Estate Agent  
and Letting Agent

[dexters.co.uk](https://www.dexters.co.uk)