



## Garden Road, TW9

**£2,200** Per calendar month

Situated within a modern popular development, this two-bedroom apartment offers a perfect blend of style, comfort, and convenience, the property provides an exceptional standard of contemporary living in one of southwest London's most desirable areas. All bills are included in the rent.

Garden Road provides great access to Richmond Town Centre and has good transport links nearby. Kew Gardens, Old Deer Park and Richmond Park are nearby.

### Features

- Two Bedrooms
- Bills included Separately
- Modern Bathroom
- Communal Gardens
- Private Balcony
- Wooden Floors



## Garden Road, TW9

The apartment features two generously sized double bedrooms, both flooded with natural light, alongside a sleek, modern bathroom fitted with high-quality fixtures.

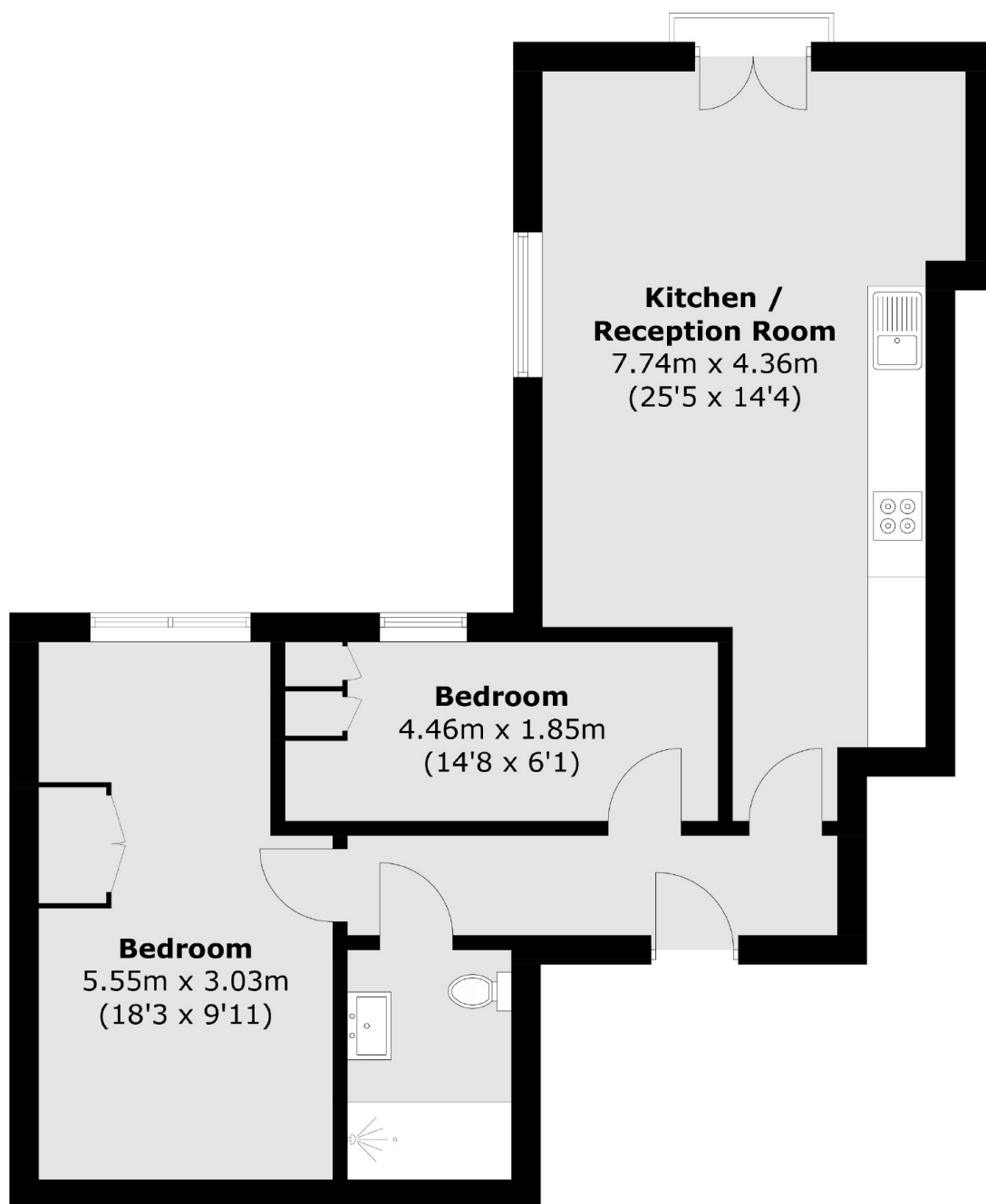
The property offers a bright and spacious open-plan kitchen and reception area, thoughtfully designed for both entertaining and everyday living. From here, doors open onto a private balcony ideal for relaxing or enjoying your morning coffee in the open air.

This outstanding apartment offers a rare opportunity to enjoy premium living in a prime location, with everything you need right on your doorstep.





# Garden Road, Richmond, TW9



Total area (approx.): 62.6 sq. m (673.8 sq. ft)

## Dexters

Richmond  
1 Sheen Road  
Richmond  
TW9 1AD  
Lettings  
020 8288 0828

Energy Rating: B. We aim to make our particulars both accurate and reliable. However they are not guaranteed; nor do they form part of an offer or contract. If you require clarification on any points then please contact us, especially if you're traveling some distance to view. Please note that appliances and heating systems have not been tested and therefore no warranties can be given as to their good working order.

 **RICS** | Regulated  
Estate Agent  
and Letting Agent

[dexters.co.uk](https://www.dexters.co.uk)