



St. Leonards Road, SW14

£5,750 Per calendar month

**Dexters**



## St. Leonards Road, SW14

A beautifully refurbished five-bedroom home situated on a highly sought-after residential road, close to Mortlake Station.

The ground floor features two spacious reception rooms and a modern, fully equipped kitchen with direct access to a generous private patio garden, perfect for entertaining or family living.

The first floor features three spacious double bedrooms, each with its own luxurious en-suite bathroom, while the top floor provides two further bedrooms, also complete with stylish en-suites offering comfort and privacy for family and guests alike.

Every detail of this home has been finished to a high specification, combining contemporary design with timeless elegance. Additional benefits include a private driveway and convenient side access to the garden.

Nestled on a picturesque residential street, this property enjoys an unbeatable location with the shops, cafés, and amenities of Sheen Lane close by.

Waitrose on Upper Richmond Road West, making everyday shopping effortless. Excellent transport links are close at hand, with Mortlake Station nearby, providing fast and frequent services to Clapham Junction, Waterloo, and Richmond.

### Features

- Five Bedrooms
- Five Bathrooms
- Close to Mortlake Station
- Side Access
- Private Garden
- Eat In Kitchen





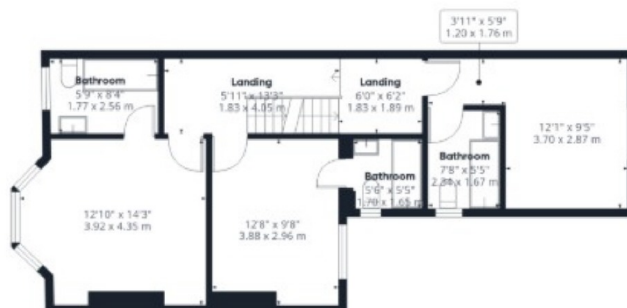




# St. Leonards Road, London, SW14



Floor 0



Floor 1



Floor 2

## Dexters

Kew  
2 Mortlake Terrace  
London  
TW9 3DT  
Lettings  
020 8939 6071

Energy Rating: C. We aim to make our particulars both accurate and reliable. However they are not guaranteed; nor do they form part of an offer or contract. If you require clarification on any points then please contact us, especially if you're traveling some distance to view. Please note that appliances and heating systems have not been tested and therefore no warranties can be given as to their good working order.

**RICS** Regulated  
Estate Agent  
and Letting Agent

dexters.co.uk