

Pagoda Heights

Sandycombe Road, Richmond, TW9



Welcome to Pagoda Heights

Pagoda Heights is an exclusive collection of brand new luxury one and two bedroom apartments. Thoughtfully designed to maximise natural light, offering the perfect blend of elegance and modern comfort. Each apartment is finished to an exceptional standard, featuring high specifications, private balconies and air conditioning.

Pagoda Heights is an exclusive collection of brand new luxury one and two bedroom apartments. Thoughtfully designed to maximise natural light, offering the perfect blend of elegance and modern comfort. Each apartment is finished to an exceptional standard, featuring high specifications, private balconies and air conditioning.



Specification

Premium fittings and appliances included in each flat:

Kitchen appliances

- Siemens BF525LMSOB built-in microwave
- Siemens HB.35B B series built-in electric oven (stainless steel)
- Siemens built-in fridge-freezer KI87VVFEOG
- Siemens WN34A1U8GB free-standing washer dryer (white)
- Siemens dishwasher SN61IX12TG

Heating and ventilation

- Daikin Altherma ERGAO4DVA (air-to-water heat pump, low temperature split)
- Unity CV2GIP / CV2SVGIP (decentralised mechanical extract ventilation)
- Underfloor heating in kitchen

Security and smart home features

- Cronus video door system (2-wire series, intelligent home digital touch screen, 7-inch monitor)

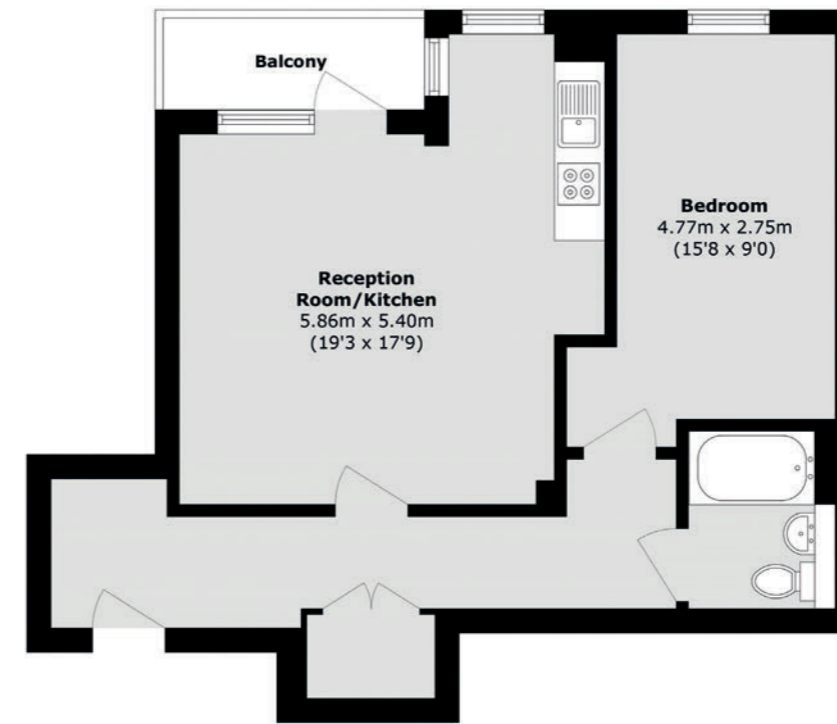
Connectivity

- BT Openreach WiFi provider



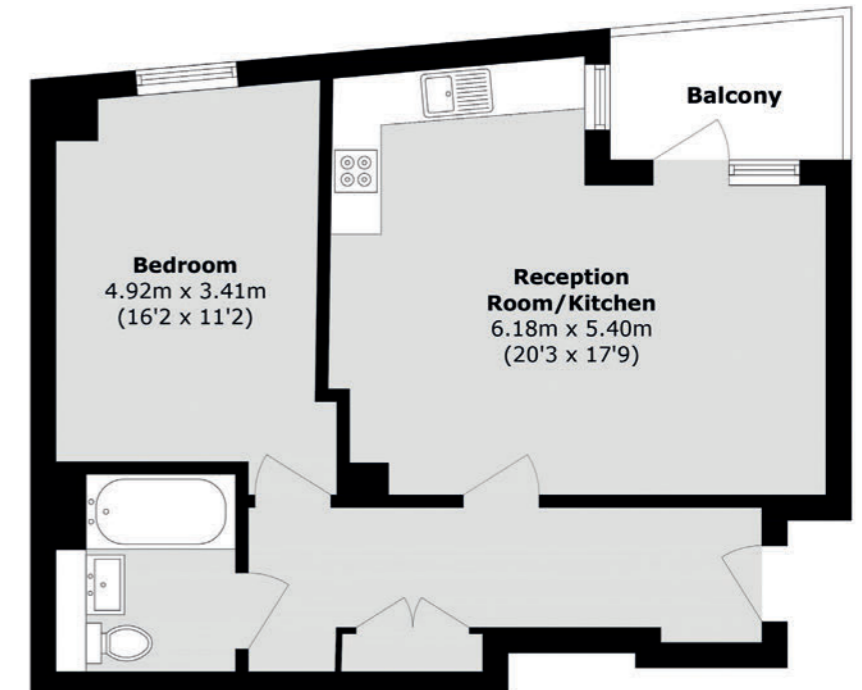
Floorplans

Flat 2



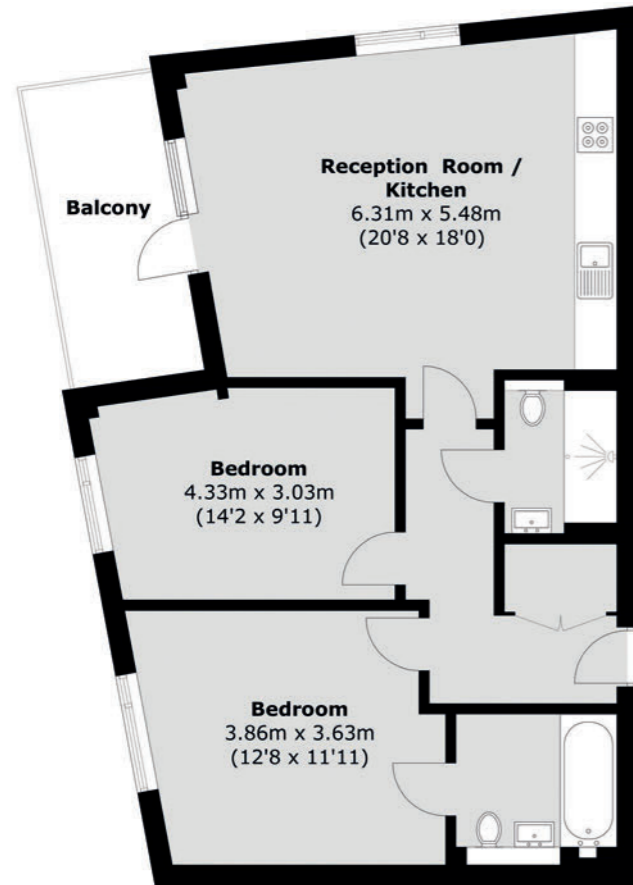
Total area (approx.) 645.8 sq. ft (60.0 sq. m)
Balcony area (approx.) 44.1 sq. ft (4.1 sq. m)

Flat 3



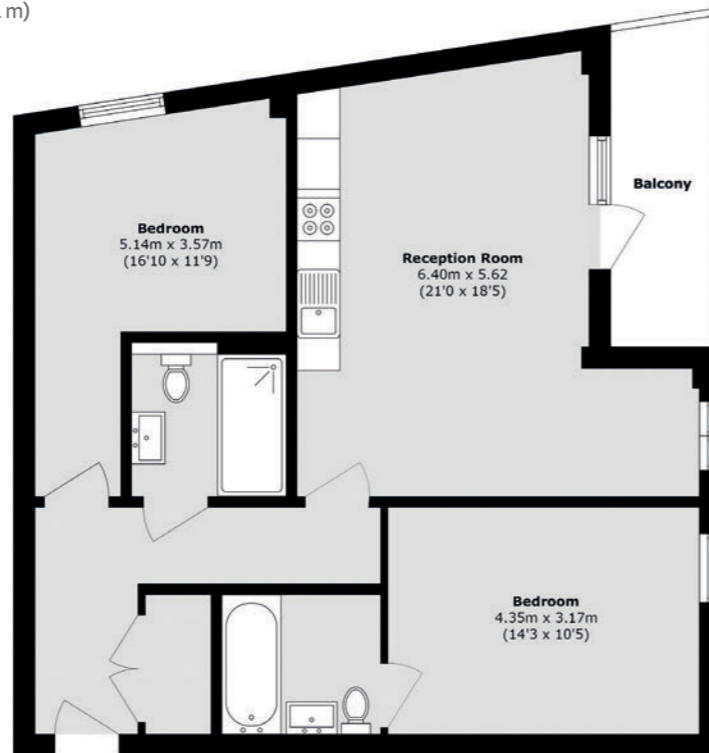
Total area (approx.) 618.9 sq. ft (57.5 sq. m)
Balcony area (approx.) 51.6 sq. ft (4.8 sq. m)

Flat 4



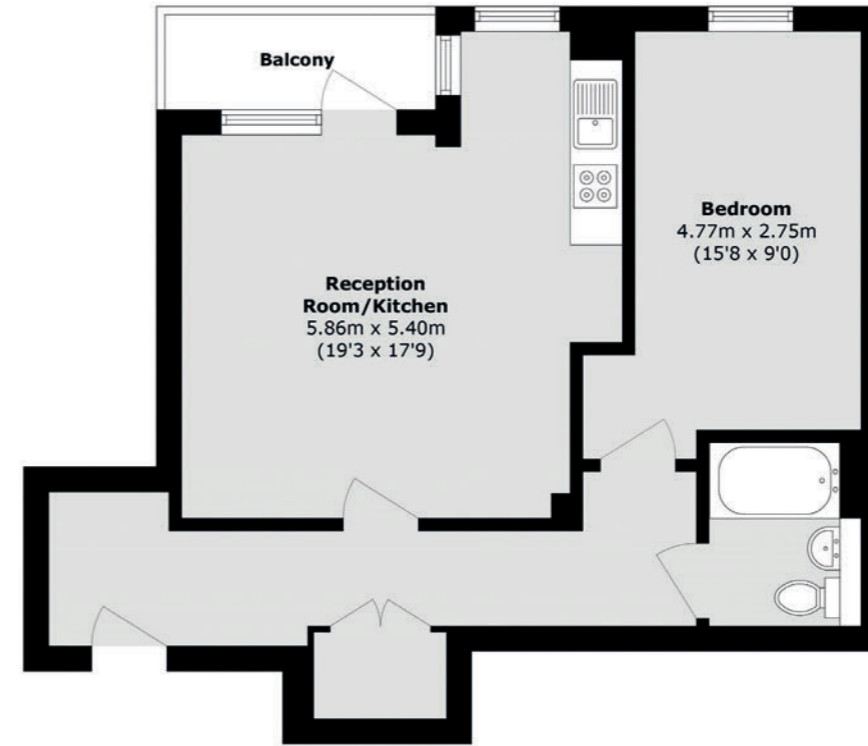
Total area (approx.) 815.9 sq. ft (75.8 sq. m)
Balcony area (approx.) 87.1 sq. ft (8.1 sq. m)

Flat 5



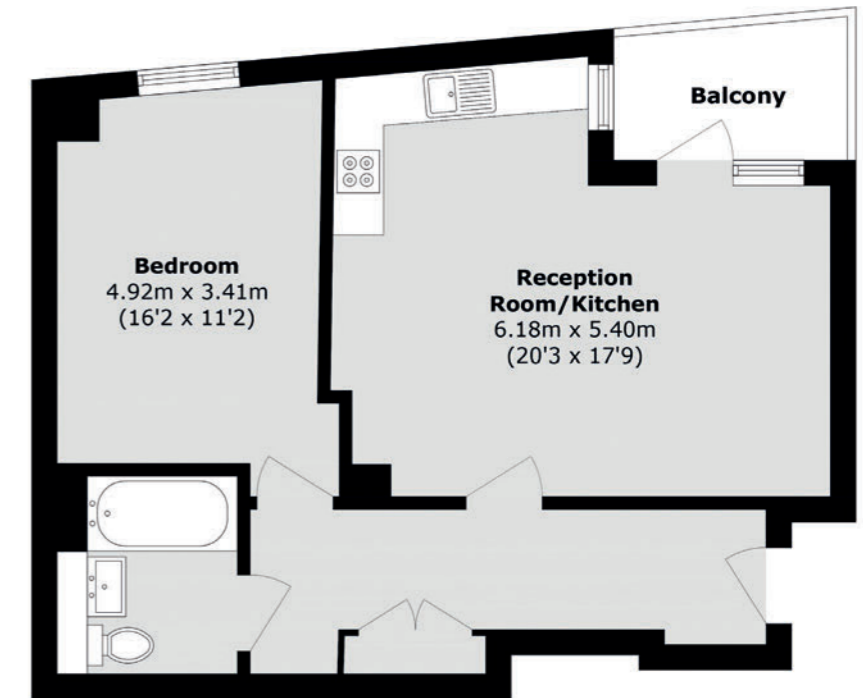
Total area (approx.) 832.0 sq. ft (77.3 sq. m)
Balcony area (approx.) 75.3 sq. ft (7.0 sq. m)

Flat 7



Total area (approx.) 645.8 sq. ft (60.0 sq. m)
Balcony area (approx.) 44.1 sq. ft (4.1 sq. m)

Flat 8



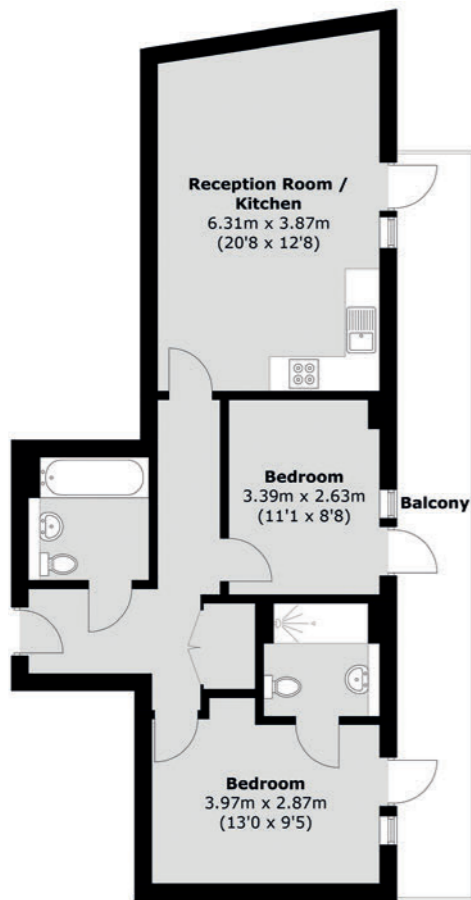
Total area (approx.) 618.9 sq. ft (57.5 sq. m)
Balcony area (approx.) 51.6 sq. ft (4.8 sq. m)

Flat 9



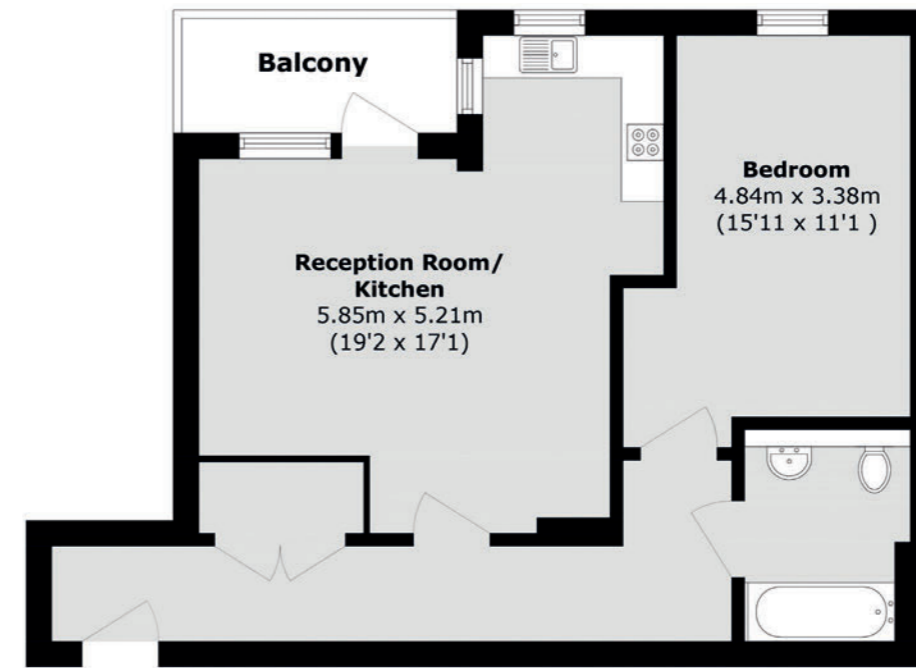
Total area (approx.) 588.8 sq. ft (54.7 sq. m)
Terrace area (approx.) 584.5 sq. ft (54.3 sq. m)

Flat 10



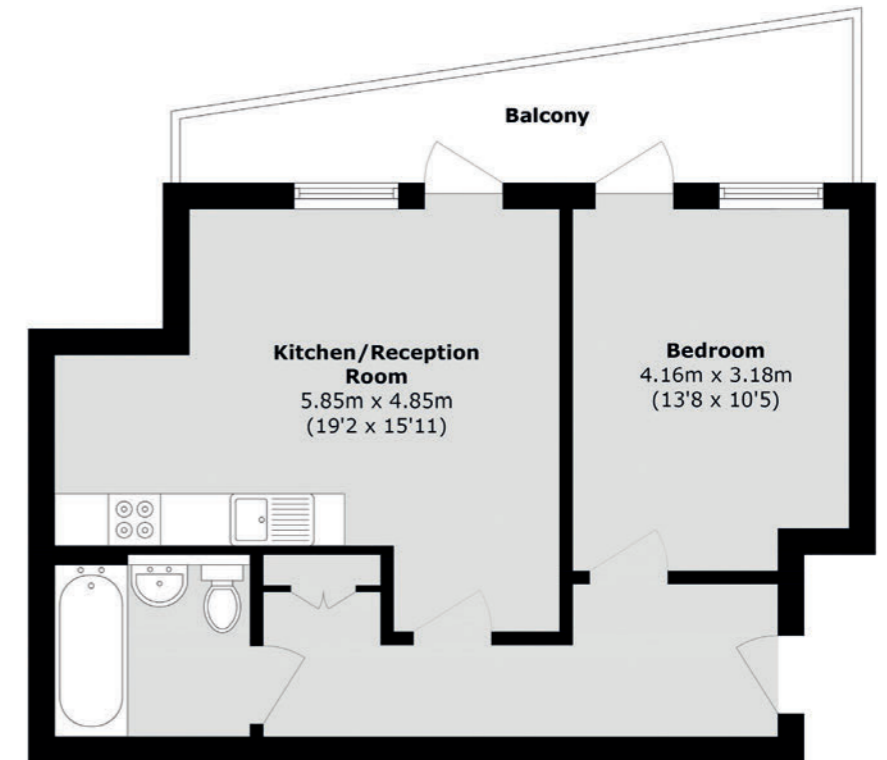
Total area (approx.) 708.3 sq. ft (65.8 sq. m)
Balcony area (approx.) 189.0 sq. ft (17.0 sq. m)

Flat 11



Total area (approx.) 608.1 sq. ft (56.5 sq. m)
Terrace area (approx.) 51.6 sq. ft (4.8 sq. m)

Flat 12



Total area (approx.) 547.8 sq. ft (50.9 sq. m)
Terrace area (approx.) 109.7 sq. ft (10.2 sq. m)

Amenities and dining out

1. Cafe to Relli
2. Pizza Express
3. Kew Garden Hotel
4. Gail's
5. Sainsburys
6. Rara Kew
7. Tesco Express

Schools

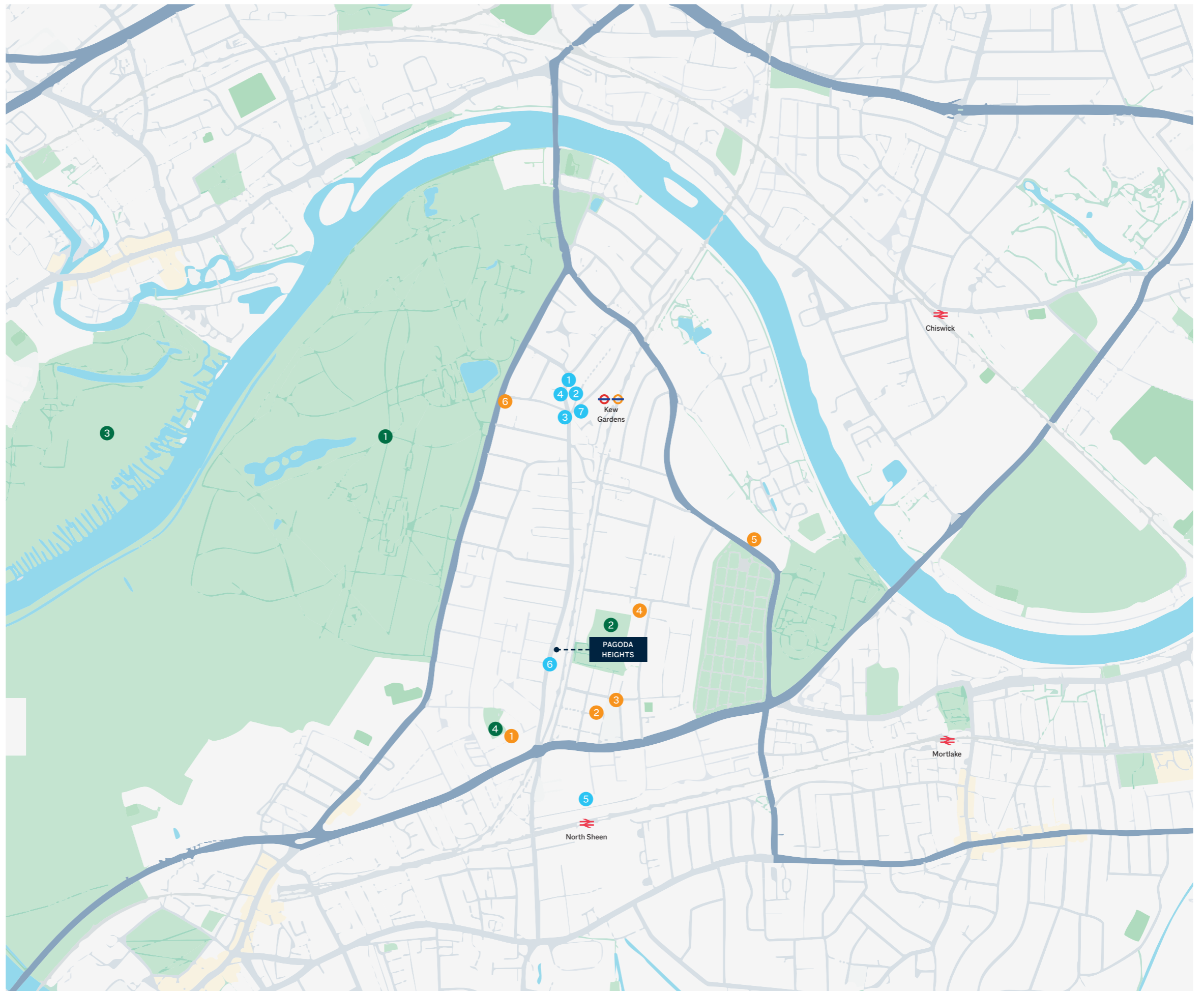
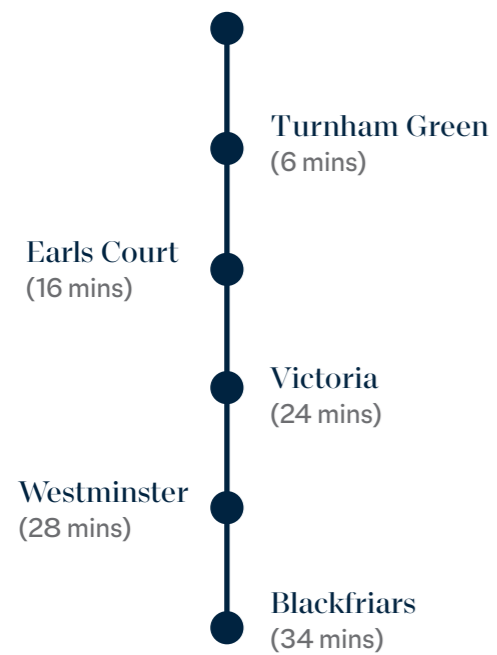
1. Windham Nursery
2. Darell Nursery and Primary
3. Casa Montessori
4. The Barn Nursery
5. Kew Bridge Primary
6. Broomfield House School

Parks and recreation

1. Kew Gardens
2. North Sheen Recreation
3. Syon House
4. Raleigh Road Recreation

District Line (London Underground)

Kew Gardens





Dexters

New Homes West London
20 Claremont Road,
London, KT6 4QU
020 8614 1222
newhomeswest@dexters.co.uk

dexters.co.uk