



Park Lane, W1K

£63,000 Per week

Dexters



Park Lane, London, W1K

Sophisticated and stylish, the five bedroom Grosvenor Penthouse Suite has been designed to provide a luxurious Mayfair residence with the refined services of a luxury hotel.

Well-appointed media rooms offer a hub of entertainment with 55 inch televisions and games consoles, while the bespoke study areas are an ideal space for relaxing with a book or taking care of business during your stay.

The Grosvenor Penthouse is the largest of the suites and offers 448 square metres of lavish space with private lift to penthouse level. Separate living, dining and study area, complete with baby grand piano offer flexible space for entertaining.

Your London experience will be enriched with insider knowledge tailored to your interests and needs by the dedicated Concierge team.

On the corner of Mount Street and Park Lane, Grosvenor House Suites overlooks the wide open spaces of Hyde Park and is conveniently placed for the world class shops and restaurants of Mayfair.

Features

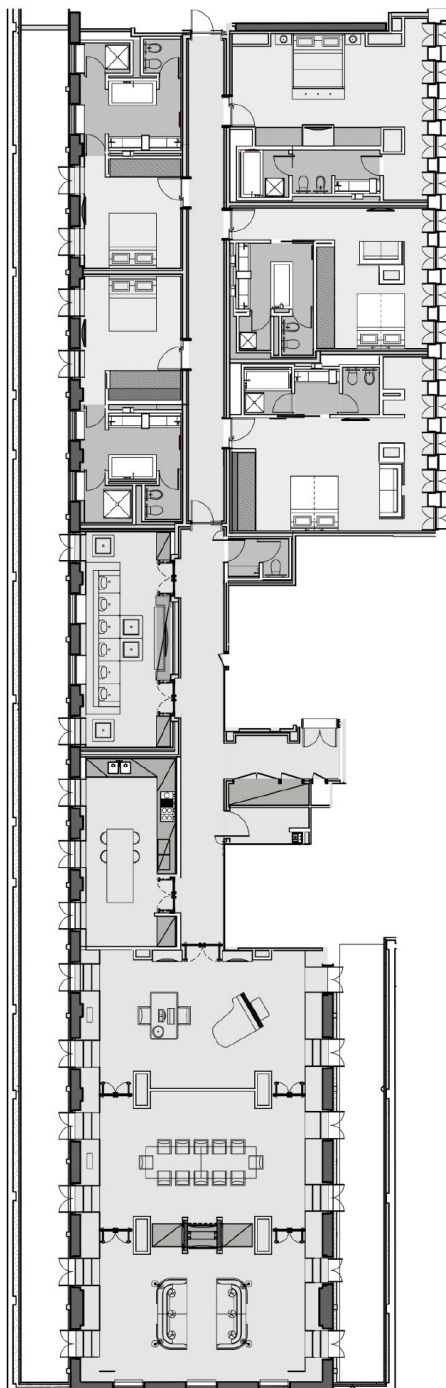
- Daily Maid Service
- Media Room
- Residents Gymnasium
- Five Bedroom Suite
- Two Car Valet Parking
- 24 Hour Room Service







Park Lane, London, W1K



Dexters

Mayfair
66 Grosvenor Street, London,
W1K 3JL

Lettings
020 7590 9590

Energy Rating: E. We aim to make our particulars both accurate and reliable. However they are not guaranteed; nor do they form part of an offer or contract. If you require clarification on any points then please contact us, especially if you're traveling some distance to view. Please note that appliances and heating systems have not been tested and therefore no warranties can be given as to their good working order.

 **RICS** | Regulated
Estate Agent
and Letting Agent

[dexters.co.uk](https://www.dexters.co.uk)