



Park Lane, W1K

£3,995,000

Dexters



## Park Lane, London, W1K

An elegant two double bedroom duplex apartment with excellent entertaining space, a private terrace and patio garden which is located in this white stucco fronted building on Park Lane.

The attractive hallway leads to the west facing reception room which has high ceilings and three large doors which open onto a private terrace and stairs down to the paved garden.

The master bedroom is a generous size which leads to an attractive, bright conservatory and onto the private garden. There is a luxury en suite bathroom, good size guest bedroom with en suite shower room, guest cloakroom and kitchen.

The building was recently developed and refurbished throughout to create six apartments. The property also benefits from air cooling, lift and porter.

Conveniently located on the north end of Park Lane close to Marble Arch, this apartment is opposite the open spaces of Hyde Park with many famous hotels, restaurants, shops and private members clubs within easy reach.

### Features

- Elegant Apartment
- High Ceilings
- Terrace
- Conservatory
- Private Garden
- Large Reception Room





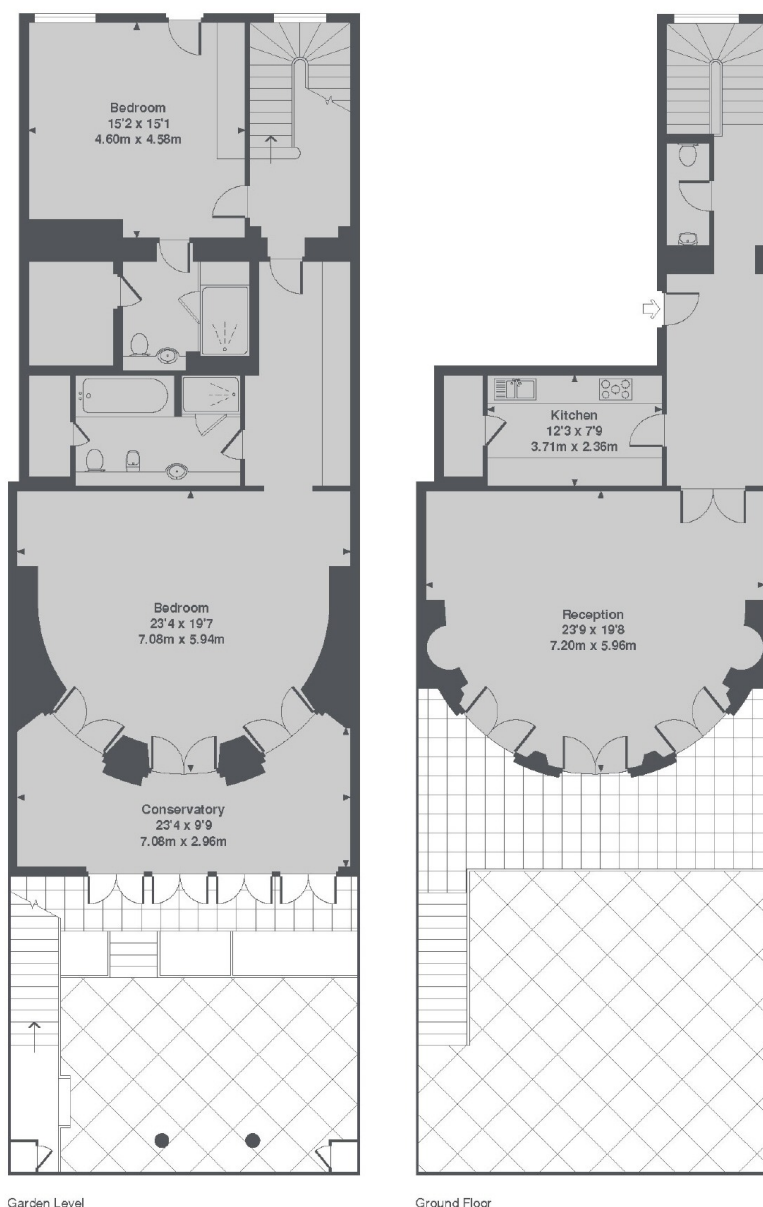








# Park Lane, London, W1K



Garden Level

Ground Floor

Total Approx. Floor area 2083 Sq. Ft. (193.5 Sq. M.)

**Dexters**

Mayfair  
66 Grosvenor Street, London,  
W1K 3JL

Sales  
020 7590 9590

Energy Rating: C. We aim to make our particulars both accurate and reliable. However they are not guaranteed; nor do they form part of an offer or contract. If you require clarification on any points then please contact us, especially if you're traveling some distance to view. Please note that appliances and heating systems have not been tested and therefore no warranties can be given as to their good working order.

**RICS** | Regulated  
Estate Agent  
and Letting Agent

[dexters.co.uk](https://www.dexters.co.uk)