



Farm Street, W1J

£3,500 Per week

Dexters





## Farm Street, London, W1J

A recently refurbished and interior designed four bedroom Mayfair town house close to Berkeley Square retaining many original period features as well as a private patio garden.

Arranged over five floors with two reception rooms, open plan kitchen/dining room, four bedrooms, four bathrooms and a study this property makes the perfect Mayfair family home.

To accommodate the warmer months the house has been thoughtfully designed to include outside living space in the form of a large terrace accessible from the dining area through bi-fold doors and a balcony from the master bedroom. If that isn't enough, the property further benefits from air conditioning.

The house has a quiet residential positioning directly opposite the historic Farm Street Catholic Church. The property is also very close to a number of quirky Mayfair pubs including The Punch Bowl and The Coach and Horses to name a few.

On the South side of Farm Street the house is conveniently placed close to the world famous restaurants and shops that Mayfair has to offer.

### Features

Interior Designed  
2,500 Sq Ft  
Four Bedrooms  
Patio Garden  
Central Mayfair  
Period Features



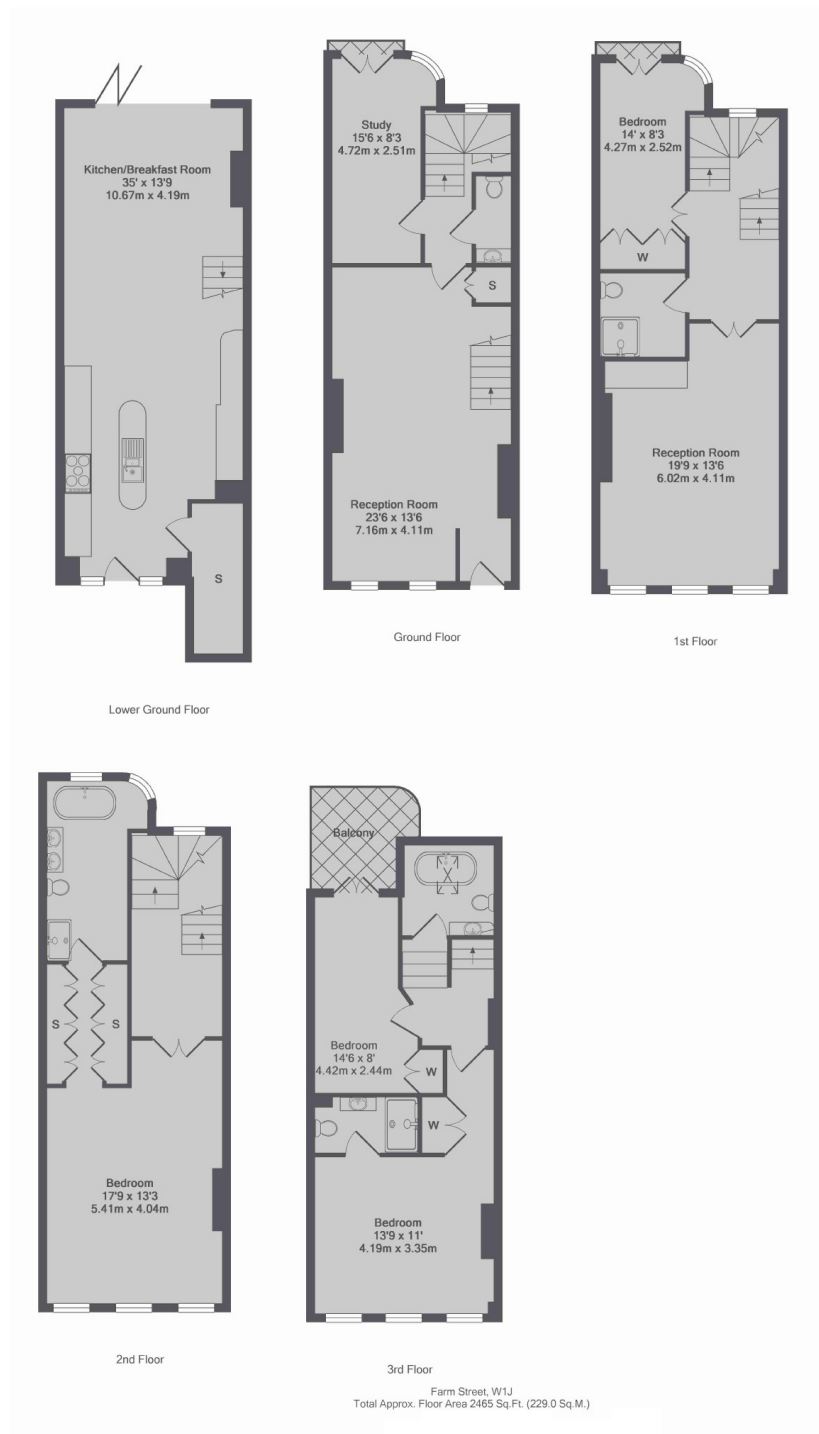








# Farm Street, London, W1J



**Dexters**

Mayfair  
66 Grosvenor Street, London,  
W1K 3JL

Lettings  
020 7590 9590

Energy Rating: C. We aim to make our particulars both accurate and reliable. However they are not guaranteed; nor do they form part of an offer or contract. If you require clarification on any points then please contact us, especially if you're traveling some distance to view. Please note that appliances and heating systems have not been tested and therefore no warranties can be given as to their good working order.

**RICS** Regulated  
Estate Agent  
and Letting Agent

[dexters.co.uk](https://www.dexters.co.uk)