

Cork Street, W1S

£4,100,000

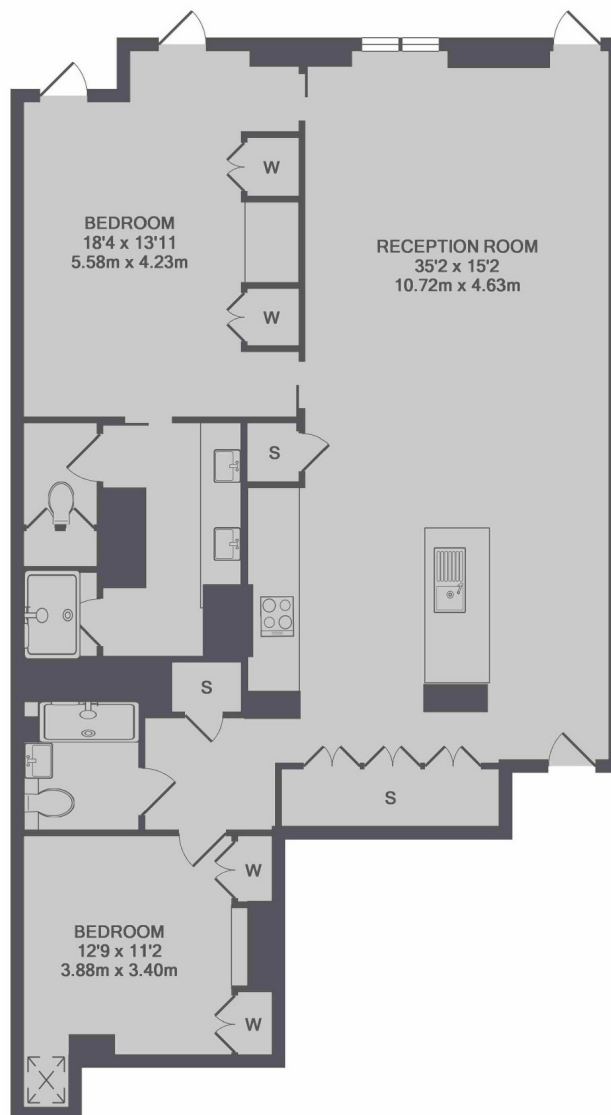
This two bedroom, two bathroom apartment is located on the first floor of this newly built development with residents gym, 24-hour concierge and underground parking.

Set between New Bond Street and Saville Row, the apartment is served by Green Park or Piccadilly Circus underground stations. The world famous 'Burlington Arcade' is at the bottom of Cork street.

Features

- Two Bedrooms
- Two Bathrooms
- Underground parking
- Comfort Cooling
- Residents Gym
- 24-Hour Concierge

Cork Street, London, W1S



TOTAL APPROX. FLOOR AREA 1238 SQ.FT. (115.0 SQ.M.)

Contact

To arrange a viewing call our office on the number below or visit our website.



Energy Rating: B. We aim to make our particulars both accurate and reliable. However they are not guaranteed; nor do they form part of an offer or contract. If you require clarification on any points then please contact us, especially if you're traveling some distance to view. Please note that appliances and heating systems have not been tested and therefore no warranties can be given as to their good working order.