



## Woods Mews, W1K

£4,500 Per week

**Dexters**



## Woods Mews, London, W1K

An exceptional family home of impressive proportions situated close to Park Lane, Hyde Park & Grosvenor Square.

This five bedroom house is set over just four floors and benefits from generous reception rooms, an opulent master bedroom suite situated over the entire top floor, a passenger lift to all floors as well as the added benefit of integral garage.

Interior designed to the highest specification by renowned designers 'Luxury Interiors London'.

Woods Mews is set in a quiet residential street located to the east of Hyde Park and to the north of Piccadilly. The house will enjoy unobstructed leafy views over the hidden Green Street Gardens'.

### Features

- Five Double Bedrooms
- Lift Access to All Floors
- Secure Garage
- Utility Room
- Terrace
- Air Conditioning





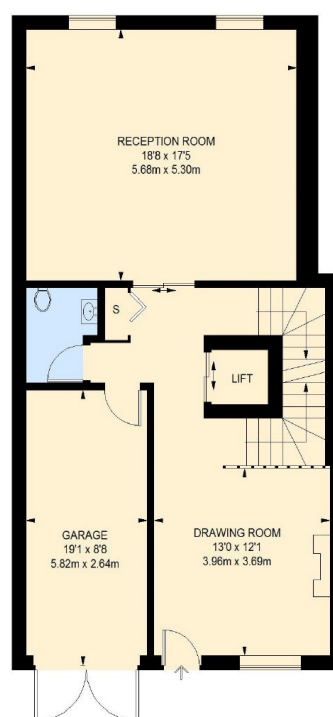
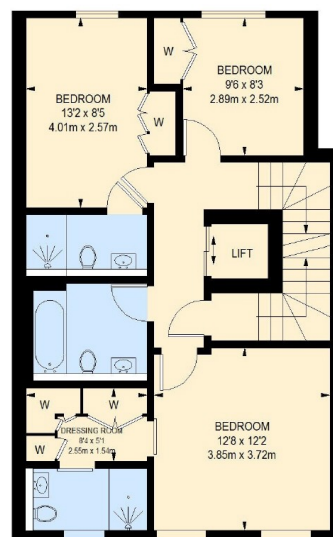
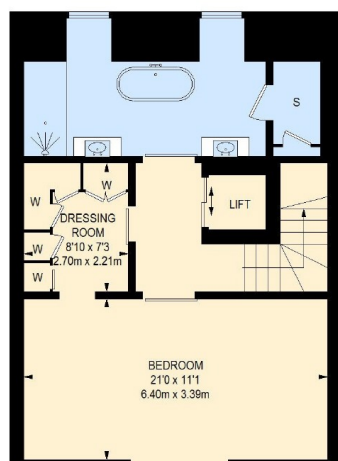








# Woods Mews, London, W1K



TOTAL APPROX. FLOOR AREA 3078 SQ. FT. (285.96 SQ. M.)

**Dexters**

Mayfair  
66 Grosvenor Street, London,  
W1K 3JL

Lettings  
0207 590 9595

Energy Rating: B. We aim to make our particulars both accurate and reliable. However they are not guaranteed; nor do they form part of an offer or contract. If you require clarification on any points then please contact us, especially if you're traveling some distance to view. Please note that appliances and heating systems have not been tested and therefore no warranties can be given as to their good working order.

**RICS** Regulated  
Estate Agent  
and Letting Agent

[dexters.co.uk](http://dexters.co.uk)