



Dunraven Street, W1K

£3,400 Per week

Dexters



Dunraven Street, London, W1K

This stunning four bedroom penthouse apartment is arranged over three floors of an imposing building which is located moments from Hyde Park and boasts spacious living space

Spanning 2,398 sq.ft this penthouse has four large bedrooms, all with built-in storage and luxury en suite bathrooms and one leading onto a private terrace overlooking Hyde Park.

There is a large fully integrated kitchen, separate utility room and a spacious reception room with excellent entertaining space.

The property benefits from direct lift access to all floors, air conditioning, wooden flooring, high ceilings and an abundance of storage throughout.

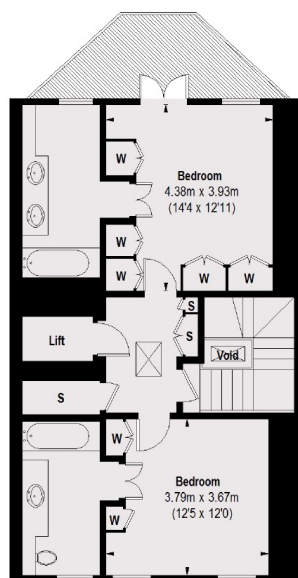
Dunraven Street is perfectly located for some of London's finest restaurants, the green expanses of Hyde Park and excellent transport links, including Marble Arch and Bond Street tube stations.

Features

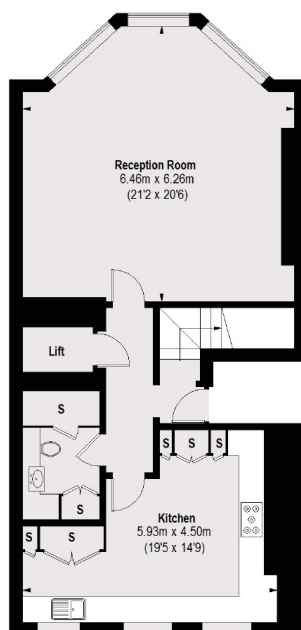
- Four Double Bedrooms
- Direct Internal Lift Access
- Air Conditioning Throughout
- Lovely Balcony
- Views Across Hyde Park
- Wooden Flooring



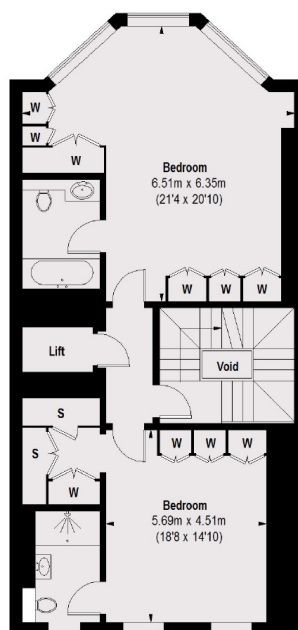
Dunraven Street, London, W1K



FIFTH FLOOR



THIRD FLOOR



FOURTH FLOOR

TOTAL APPROX. FLOOR AREA (EXCLUDING VOID) /
(INCLUDING LIFT) 2398 SQ. FT. (222.75 SQ. M.)

Dexters

Mayfair
66 Grosvenor Street, London,
W1K 3JL
Lettings
020 7529 5588

Energy Rating: B. We aim to make our particulars both accurate and reliable. However they are not guaranteed; nor do they form part of an offer or contract. If you require clarification on any points then please contact us, especially if you're traveling some distance to view. Please note that appliances and heating systems have not been tested and therefore no warranties can be given as to their good working order.

RICS Regulated
Estate Agent
and Letting Agent

dexters.co.uk