



Dunraven Street, W1K

£3,400 Per week

Dexters



Dunraven Street, London, W1K

This stunning four bedroom penthouse apartment is arranged over three floors of an imposing building which is located moments from Hyde Park and boasts spacious living space throughout.

Spanning 2,398 sq.ft this penthouse has four large bedrooms, all with built-in storage and luxury en suite bathrooms and one leading onto a private terrace overlooking Hyde Park.

There is a large fully integrated kitchen, separate utility room and a spacious reception room with excellent entertaining space.

The property benefits from direct lift access to all floors, air-conditioning, wooden flooring, high ceilings and an abundance of storage throughout.

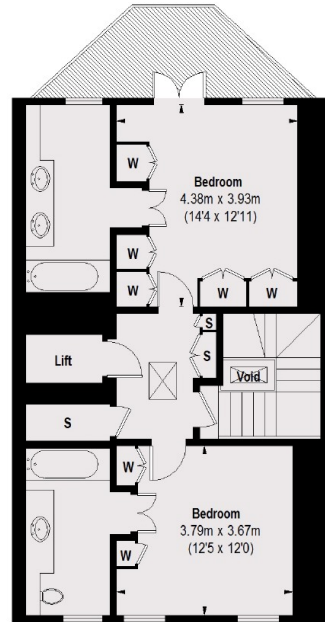
Dunraven Street is perfectly located for some of London's finest restaurants, the green expanses of Hyde Park and excellent transport links, including Marble Arch and Bond Street tube stations.

Features

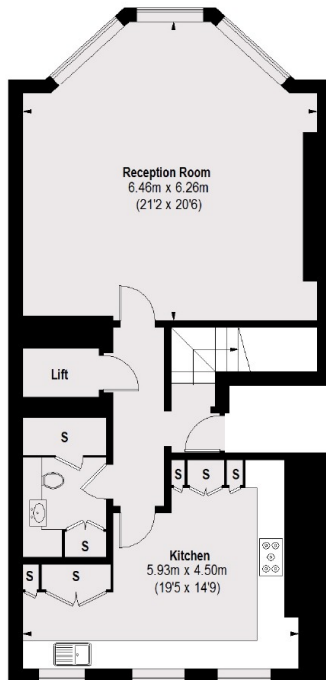
- Four Double Bedrooms
- Direct Lift Access
- Air-Conditioning
- Lovely Balcony
- Views Across Hyde Park
- Wooden Flooring



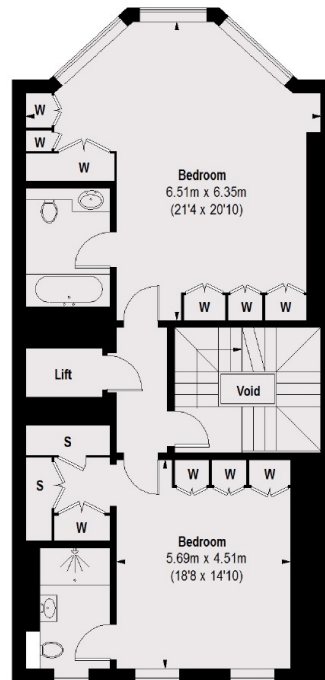
Dunraven Street, London, W1K



FIFTH FLOOR



THIRD FLOOR



FOURTH FLOOR

TOTAL APPROX. FLOOR AREA (EXCLUDING VOID) /
(INCLUDING LIFT) 2398 SQ. FT. (222.75 SQ. M.)