



Hertford Street, W1J

£2,950 Per week

Dexters



Hertford Street, London, W1J

A magnificent five bedroom house with double aspect combining the elegance and grandeur of an original Mayfair residence with the sophistication of a 21st Century specification.

The charming end of terrace townhouse of approx 3,143 sq.ft set over six floors offers well proportioned living throughout to create a modern family residence.

The house has been finished to a good standard, retaining many period features and boasts a fantastic roof terrace.

With natural light in abundance, this bright and spacious home is ready for someone to put their own stamp on it. In addition, there is a separate utility room and staff accommodation on the lower ground floor.

The house is on the corner of Hertford Street in the heart of Shepherd's market close to the open spaces of Green Park and Hyde Park.

Features

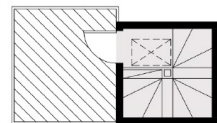
- Five Bedrooms
- Four Bathrooms
- Roof Terrace
- Two Reception Rooms
- Corner House
- Air Conditioning



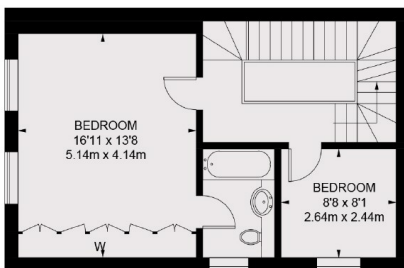




Hertford Street, London, W1J



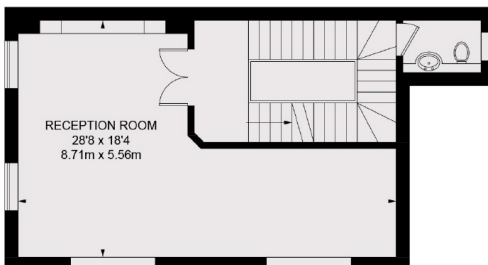
FIFTH FLOOR



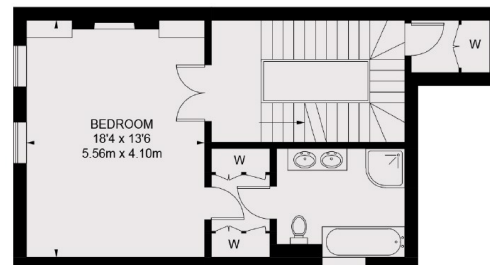
THIRD FLOOR



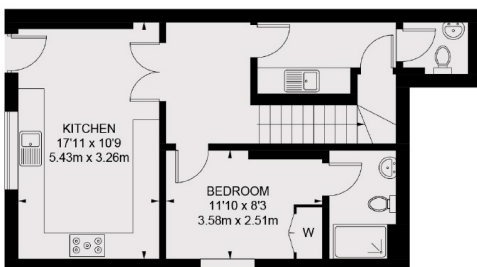
FOURTH FLOOR



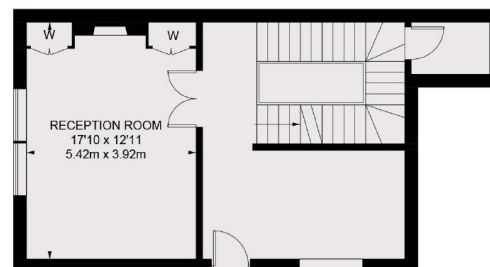
FIRST FLOOR



SECOND FLOOR



BASEMENT



GROUND FLOOR

TOTAL APPROX. FLOOR AREA 3143 SQ. FT. (292 SQ. M.)

Dexters

Mayfair
66 Grosvenor Street, London,
W1K 3JL

Lettings
020 7529 5588

Energy Rating: D. We aim to make our particulars both accurate and reliable. However they are not guaranteed; nor do they form part of an offer or contract. If you require clarification on any points then please contact us, especially if you're traveling some distance to view. Please note that appliances and heating systems have not been tested and therefore no warranties can be given as to their good working order.

RICS Regulated
Estate Agent
and Letting Agent

dexters.co.uk