



## Woods Mews, W1K

£4,250 Per week

**Dexters**



## Woods Mews, London, W1K

Presented in partnership with WETHERELL. A charming three bedroom mews house divided over three floors with direct access to one of Mayfair's glorious secret gardens.

This impressive family home of generous proportions features spacious reception rooms, a fully equipped kitchen, and three bedrooms, all with marble en-suite. The property benefits from a balance of antique and contemporary furnishings throughout, along with the added benefit of an integral garage.

Woods Mews is set in a quiet residential street located to the east of Hyde Park and to the north of Piccadilly. The house will enjoy unobstructed leafy views over the hidden Green Street Gardens'.

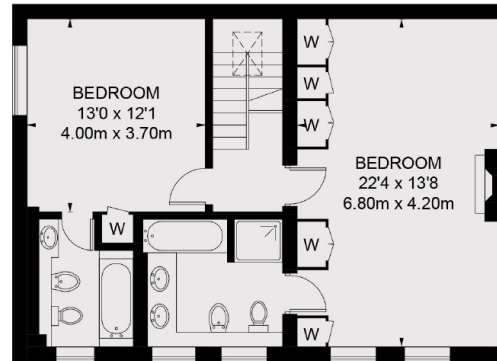
### Features

- Main Bedroom with En Suite
- Large Double Reception Room
- Two Further Double Bedrooms with En Suites
- Private Garage
- Terrace
- Direct Access to Green Street Gardens

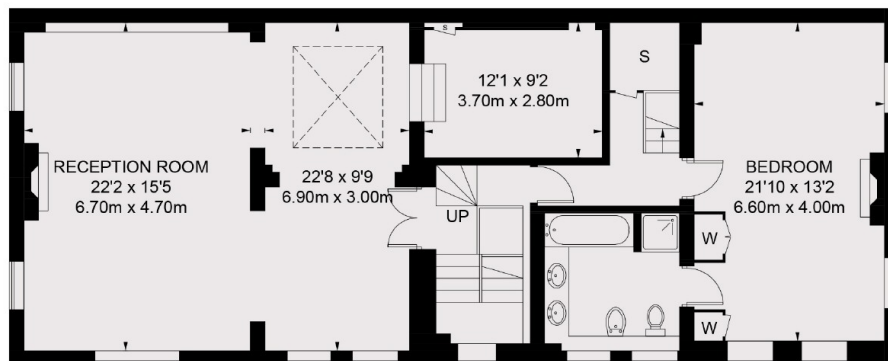




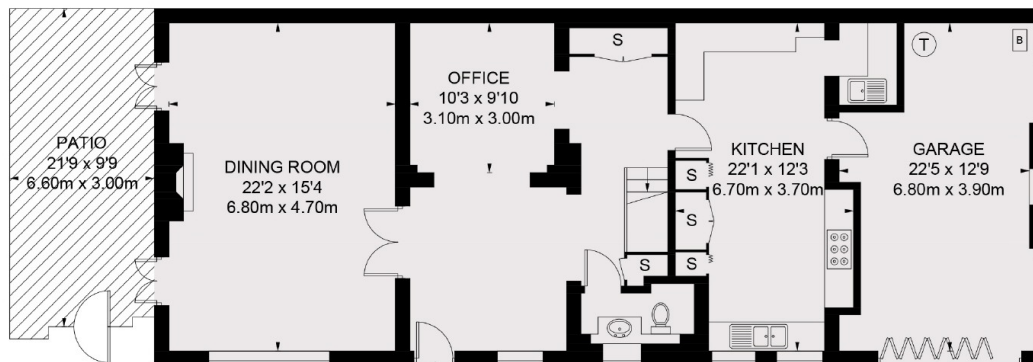
# Woods Mews, London, W1K



**SECOND FLOOR**



**FIRST FLOOR**



**GROUND FLOOR**