



## Woods Mews, W1K

£4,250 Per week

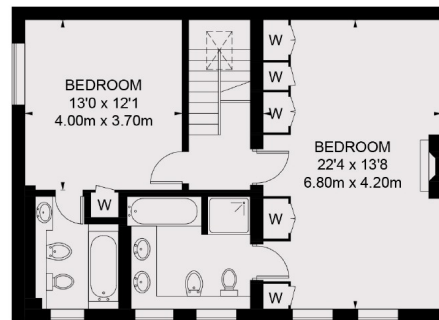
Presented in partnership with WETHERELL. A charming three bedroom mews house arranged over three floors with direct access to one of Mayfair's glorious secret gardens.

Woods Mews is set in a residential street located to the east of Hyde Park and to the north of Piccadilly. The house will enjoy unobstructed views over the hidden Green Street Gardens.

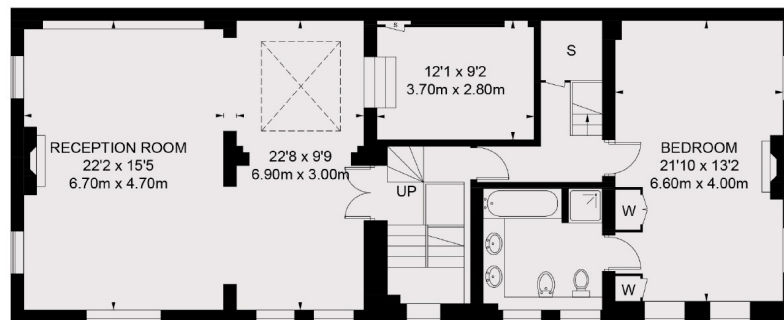
### Features

- Three Bedrooms
- Three En Suites
- Double Reception Room
- Private Garage
- Terrace
- Communal Gardens

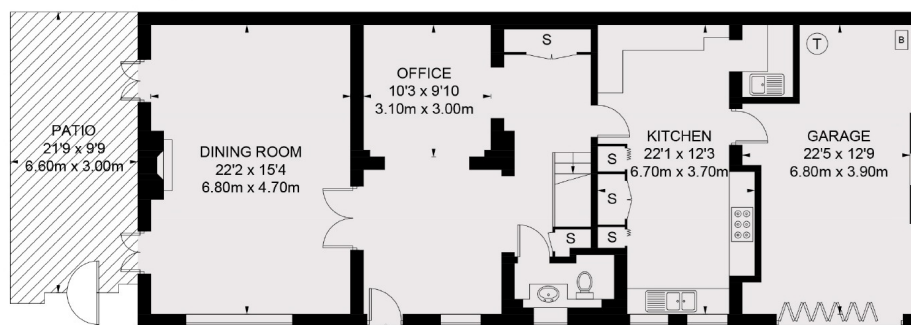
## Woods Mews, London, W1K



**SECOND FLOOR**



**FIRST FLOOR**



**GROUND FLOOR**

### Contact

To arrange a viewing call our office on the number below or visit our website.



Energy Rating: D. We aim to make our particulars both accurate and reliable. However they are not guaranteed; nor do they form part of an offer or contract. If you require clarification on any points then please contact us, especially if you're traveling some distance to view. Please note that appliances and heating systems have not been tested and therefore no warranties can be given as to their good working order.