



Dunraven Street, W1K

£6,950,000

Dexters



Dunraven Street, London, W1K

In Partnership with Wetherell. A stylish, newly refurbished two bedroom penthouse apartment arranged over two floors with a large private roof terrace ideal for entertaining.

Set within a Grade II Listed blue plaque property which was formerly a royal residence and also home of PG Wodehouse.

This elegant penthouse is located on the third and fourth floor, spanning both the width and breadth of this impressive period building. Interior designed with bespoke furnishings throughout including the latest AV systems and open feature fire place. A modern integrated kitchen with central island unit leads on to a dining area with balcony access via three french doors allowing for ample natural light.

A key feature of this spacious apartment is 731 Sq. Ft private roof terrace which offers great entertaining space with a BBQ and bar area, accessed via stairs from the fourth floor.

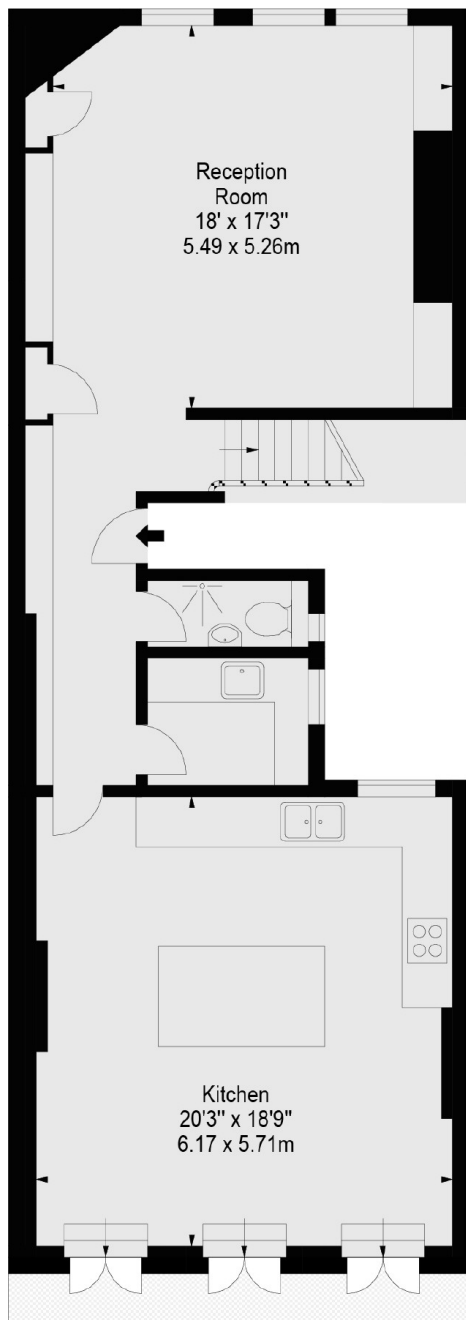
Dunraven Street is a quiet residential street located in between Park lane and Park Street, with easy access to Marble Arch Station and the vast green spaces of Hyde Park.

Features

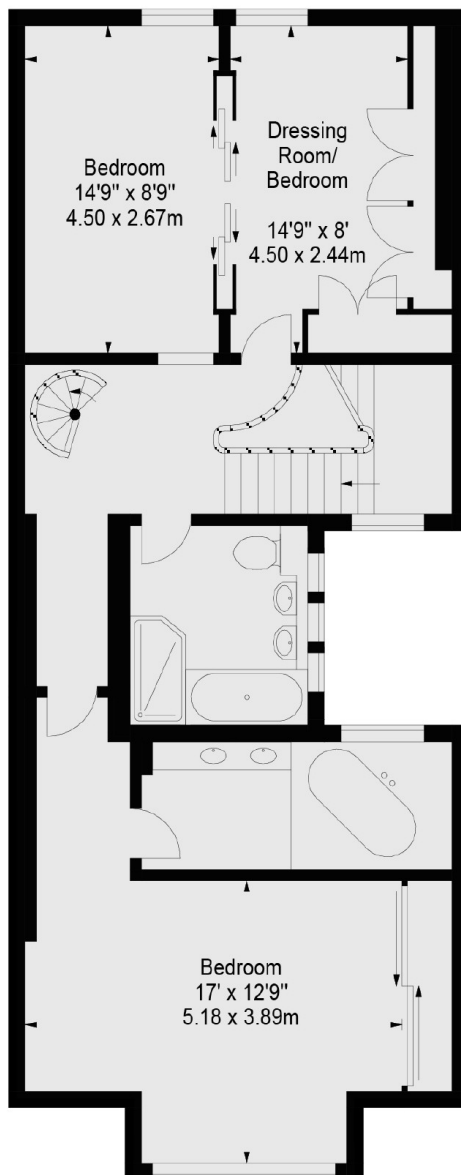
- Lift access
- Dressing Room
- Cloakroom
- Utility Room
- 1,790 Sq Ft
- Private Roof Terrace



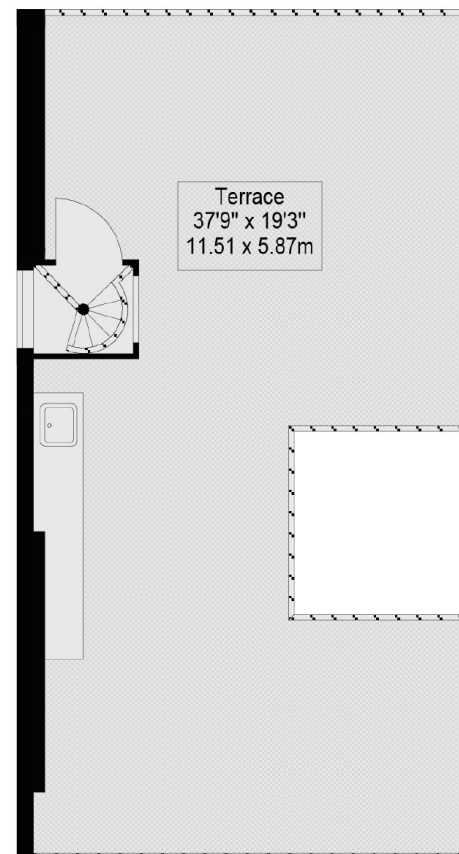
Dunraven Street, London, W1K



THIRD FLOOR



FOURTH FLOOR



ROOF TERRACE