



Queen Street, W1J

£6,950,000

Dexters



## Queen Street, London, W1J

In partnership with WETHERELL. An elegant brand new duplex penthouse apartment with three private terraces and direct lift access into the property, set within an original period building.

This property has been designed with style in mind with grey toned parquet flooring, dark solid wood doors and feature lighting throughout. The kitchen and reception room are adjoining making it convenient for entertaining with a nearby guest cloakroom.

All bedrooms have generously sized marble en-suite bathrooms. The primary guest suite benefits from having its own private morning room which leads out to one of the three roof terraces that can be enjoyed from both floors.

Located in between Charles Street and Curzon Street, next to the popular Shepherd's Market. Easy access to Green Park Underground Station and Hyde Park.

### Features

- Kitchen/Dining Room
- Reception Room
- Three Bedrooms
- Three En Suites
- Study/Bar
- Three Roof Terraces
- Lift
- Porter







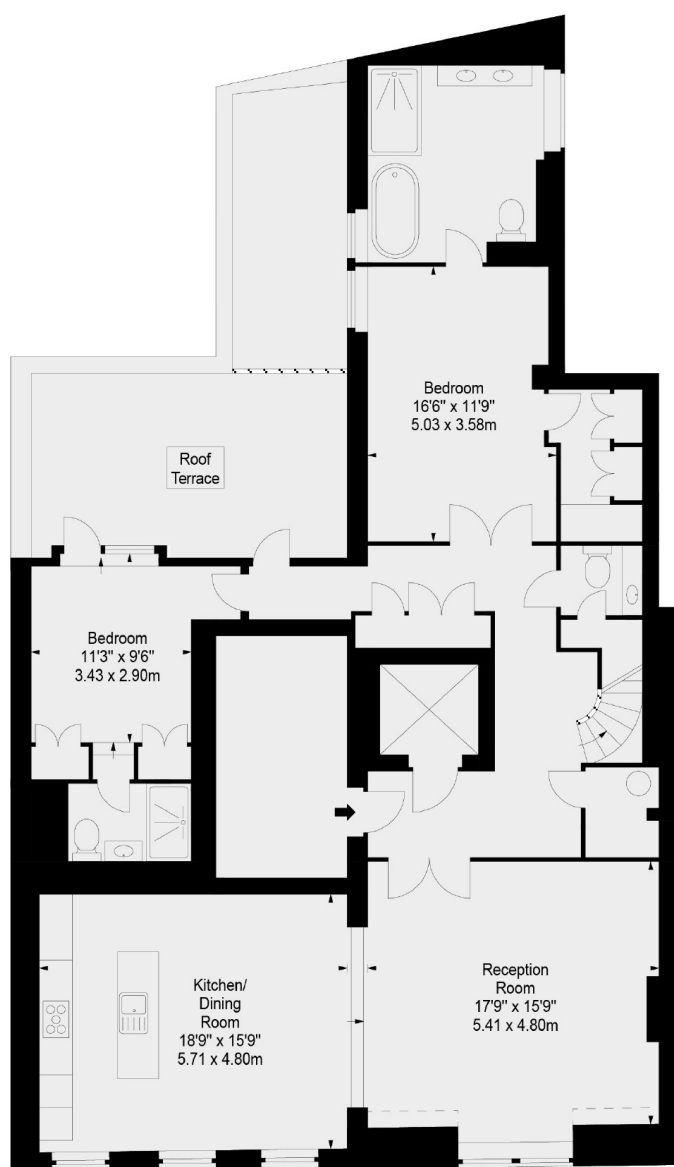




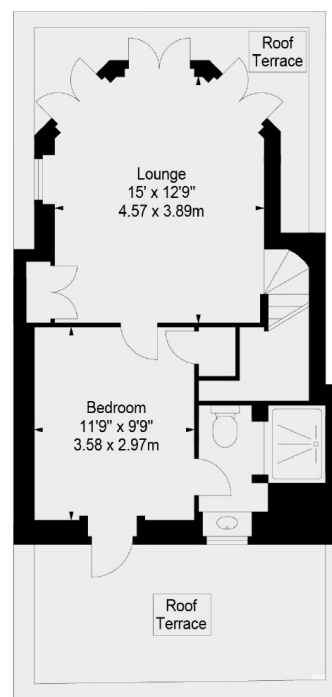
# Queen Street, London, W1J

## 4-5 QUEENS STREET MAYFAIR W1

APPROX. GROSS INTERNAL AREA \*  
1939 Ft<sup>2</sup> - 180.13 M<sup>2</sup>



FOURTH FLOOR



FIFTH FLOOR

**Dexters**

Mayfair  
66 Grosvenor Street, London,  
W1K 3JL

Sales  
020 7590 9590

Energy Rating: . We aim to make our particulars both accurate and reliable. However they are not guaranteed; nor do they form part of an offer or contract. If you require clarification on any points then please contact us, especially if you're traveling some distance to view. Please note that appliances and heating systems have not been tested and therefore no warranties can be given as to their good working order.

 **RICS** | Regulated  
Estate Agent  
and Letting Agent

[dexters.co.uk](http://dexters.co.uk)