



Dunraven Street, W1K

£2,395,000

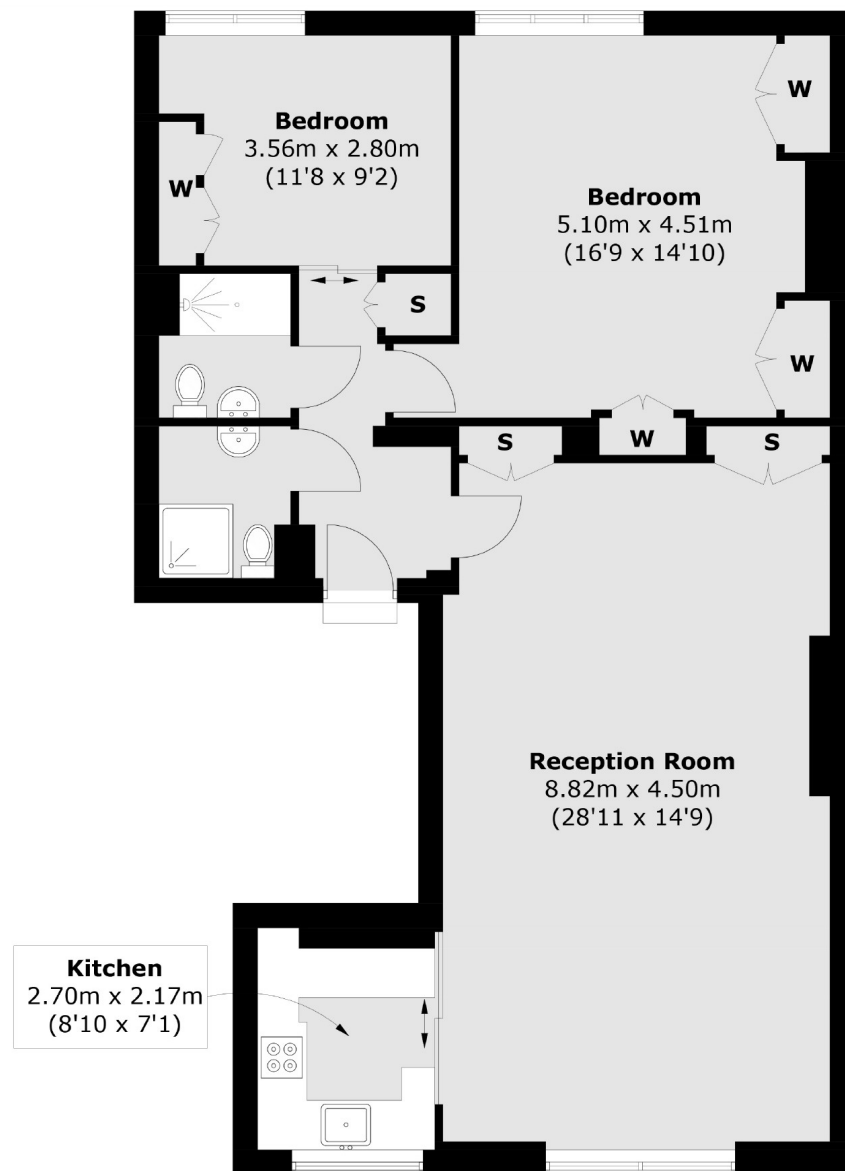
Fully refurbished to a high standard throughout, this spacious 971 sq.Ft two bedroom, two bathroom apartment has a fully integrated kitchen set back from the main dining area with a 28 ft reception room.

Dunraven Street faces London's famous Hyde Park, located off Green Street with easy access to Marble Arch station and the shops and restaurants of Oxford Street.

Features

971 Sq.Ft
Fully Refurbished
Separate Kitchen
Open Plan Reception
Two Bathrooms
Period Conversion

Dunraven Street, London, W1K



Second Floor

Total area (approx.): 90.2 sq. m (970.9 sq. ft)

Contact

To arrange a viewing call our office on the number below or visit our website.



Energy Rating: D. We aim to make our particulars both accurate and reliable. However they are not guaranteed; nor do they form part of an offer or contract. If you require clarification on any points then please contact us, especially if you're traveling some distance to view. Please note that appliances and heating systems have not been tested and therefore no warranties can be given as to their good working order.