



Arlington Street, SW1A

£5,000 Per week

Dexters



Arlington Street, London, SW1A

This stunning split level four bedroom penthouse apartment is located next to the world famous Ritz Hotel offering rare views over Green Park.

The apartment has been newly furnished and refurbished throughout, it has lift access and both garden and Green Park views.

The building has recently undergone a major refurbishment programme, has 24 hour security and portage, air conditioning throughout, lift to all floors and a car park directly underneath the building.

The apartment block backs onto Green Park and adjoins the rear of the famous Ritz Hotel, Piccadilly.

Arlington Street is a prime residential address in central London and offers unrivalled access to a number of transport links and underground stations. Close by you will find central Piccadilly,

Features

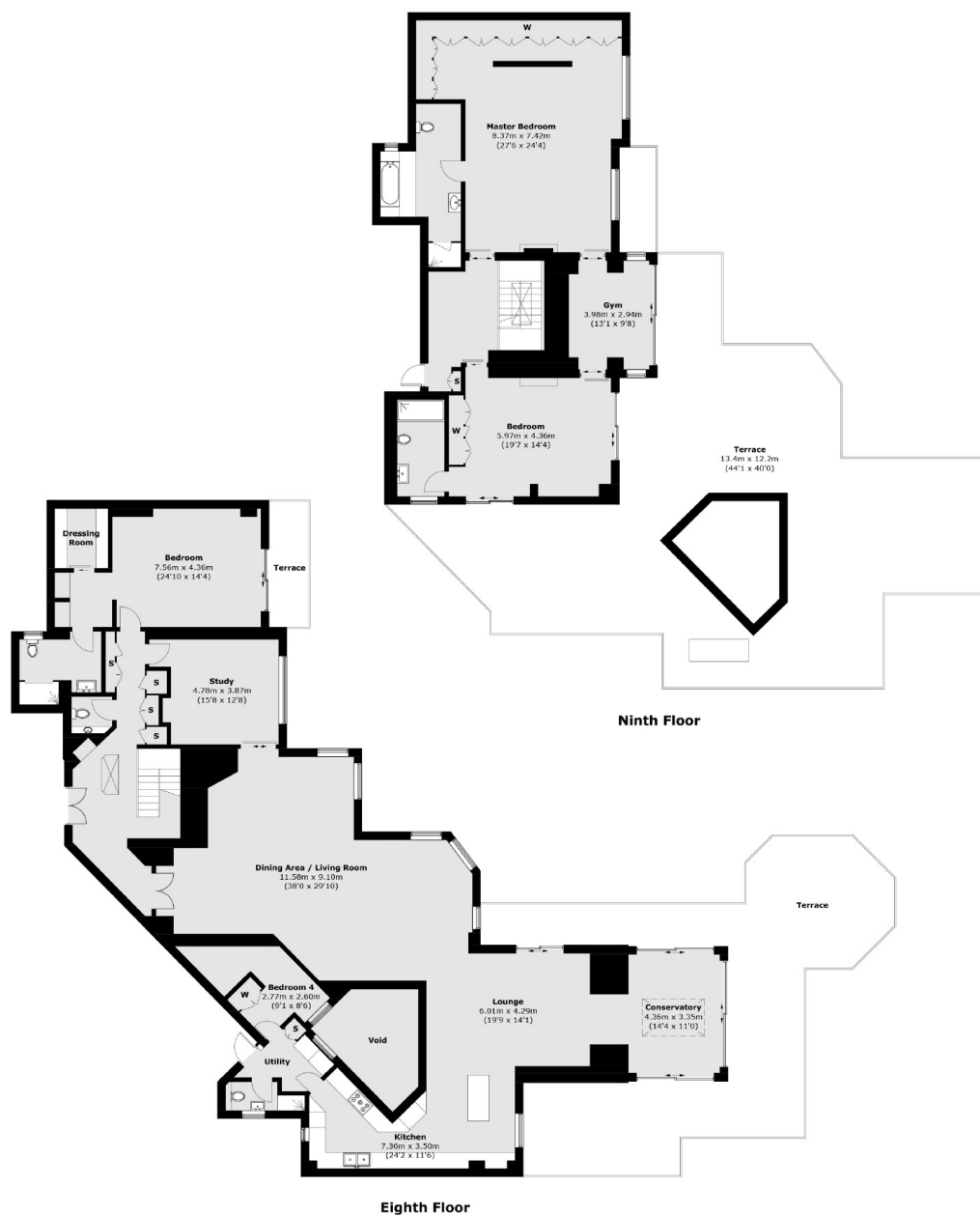
- Four Bedrooms
- Four Bathrooms
- Penthouse Apartment
- Two Stunning Roof Terraces
- Views onto Green Park
- 24 hr Porter & Security







Arlington Street, London, SW1A



Total area (approx.): 392.1 sq. m (4,220.5 sq. ft)
Terrace : 257.0 sq. m (2,766.3 sq. ft)

Dexters

Mayfair
66 Grosvenor Street, London,
W1K 3JL

Lettings
020 7529 5588

Energy Rating: C. We aim to make our particulars both accurate and reliable. However they are not guaranteed; nor do they form part of an offer or contract. If you require clarification on any points then please contact us, especially if you're traveling some distance to view. Please note that appliances and heating systems have not been tested and therefore no warranties can be given as to their good working order.

RICS Regulated
Estate Agent
and Letting Agent

dexters.co.uk