



## Mayfair Row, W1J

£4,000 Per week

**Dexters**



## Mayfair Row, London, W1J

Presented in partnership with WETHERELL. A newly renovated four bedroom villa of 3,980 sq.ft, meticulously designed to a high standard with accommodation split across four floors.

The property has a fabulous open plan kitchen and reception room and two further reception rooms on the lower ground and first floor, fantastic for entertaining or being used as informal family areas.

Two generous bedroom suites occupy the lower ground floor, with the main suite and a further guest bedroom on the second. A superb roof terrace can be reached through a retracting skylight door, perfect for the summer months.

Double garage parking available by separate negotiation.

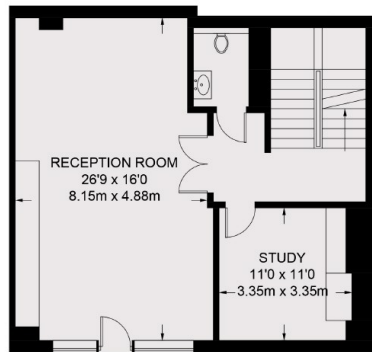
Shepherd's Market was the site of the original 'May Fair' from which the neighbourhood gets its name. This private and peaceful mews address is convenient for some of London's finest restaurants and luxury boutiques.

### Features

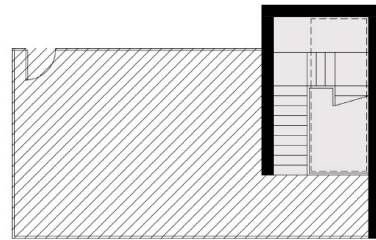
- Open Plan Kitchen
- Double Reception
- Large Main Suite
- Four Double Bedrooms
- Three En Suites
- Roof Terrace



# Mayfair Row, London, W1J



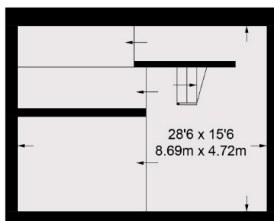
FIRST FLOOR



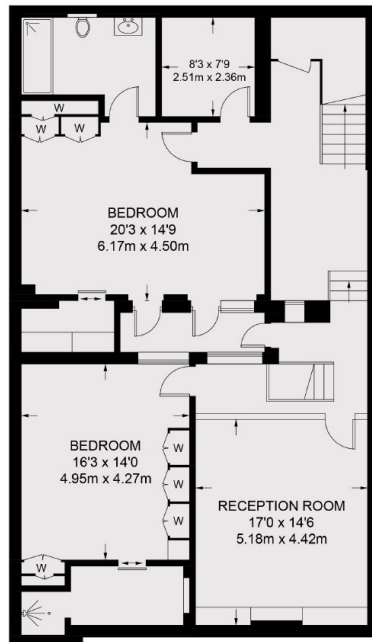
ROOF TERRACE



SECOND FLOOR



BASEMENT



LOWER GROUND FLOOR



GROUND FLOOR

TOTAL APPROX. FLOOR AREA 3980 SQ. FT. (369.7 SQ. M.)