



Spring Gardens, SW1A

£2,150,000

Dexters



Spring Gardens, London, SW1A

An elegant duplex apartment with incredible, uninterrupted views of some of London's most iconic landmarks; Nelson's Column and Trafalgar Square.

This large, well presented apartment of 1,300 sq.ft is set on the top two floors of an attractive period building located on the edge of Trafalgar Square.

On the third floor, the apartment comprises a dual aspect reception dining room and separate kitchen with breakfast bar. The fourth floor has a generous principal bedroom with en suite bathroom, a second double bedroom and a separate bathroom.

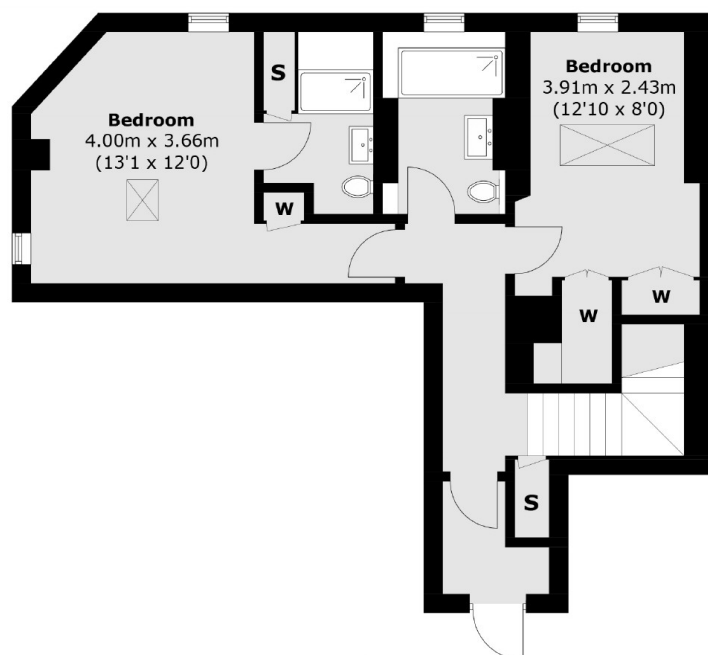
Conveniently located in the heart of London's West End with easy access to a wealth of London landmarks, theatres, boutiques, and restaurants.

Features

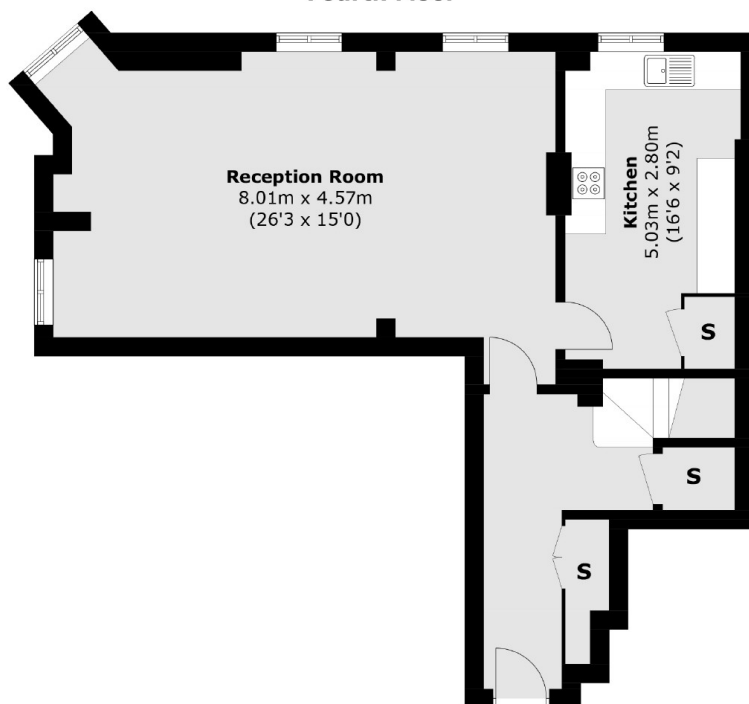
- Duplex Apartment
- Two bedrooms
- Dual Aspect Reception
- Views of Trafalgar Square
- Long Lease
- Lift



Spring Gardens, London, SW1A



Fourth Floor



Third Floor

Total area (approx.): 120.8 sq. m (1,300.2 sq. ft)

Dexters

Mayfair
102 Mount Street, London,
W1K 2TH
Sales
020 7529 5566

Energy Rating: TBC. We aim to make our particulars both accurate and reliable. However they are not guaranteed; nor do they form part of an offer or contract. If you require clarification on any points then please contact us, especially if you're traveling some distance to view. Please note that appliances and heating systems have not been tested and therefore no warranties can be given as to their good working order.

RICS | Regulated
Estate Agent
and Letting Agent

dexters.co.uk