

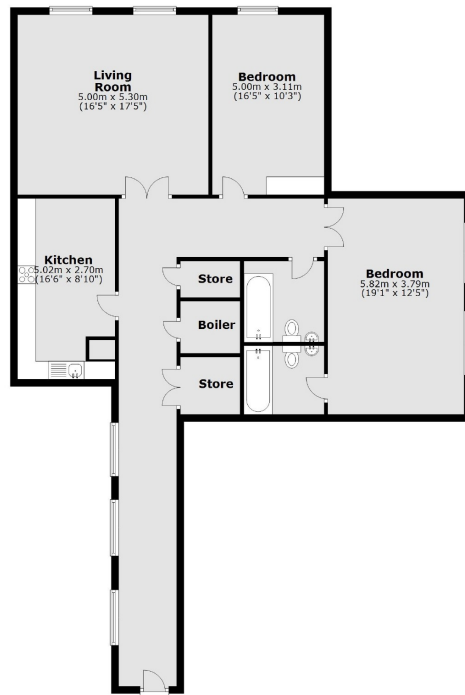


# PARK STREET

## MAYFAIR W1K



A RECENTLY REFURBISHED TWO DOUBLE BEDROOM APARTMENT LOCATED IN A POPULAR PORTERED BUILDING IN MAYFAIR ON THE CORNER OF OXFORD STREET.



This beautifully refurbished property comprises a large and light reception room with wooden floors and views over Park Street, a separate modern kitchen, a large principal double bedroom with built in wardrobes and a modern en-suite bathroom, a further double bedroom and family bathroom. The property also has a 24 hour porter and lift access.

Mayfair is one of London's most prestigious and sought after areas defined by its historic buildings, elegant squares and gardens. Park Street is conveniently situated to enjoy some of the best shopping, restaurants and bars in the area.

#### FEATURES

- Double Reception Room
- 24-Hour Porterage
- Wood Flooring
- Air Cooling
- Lift Access
- Excellent Location

Price: £1,615 Per week

We aim to make our particulars both accurate and reliable. However they are not guaranteed; nor do they form part of an offer or contract. If you require clarification on any points then please contact us, especially if you're traveling some distance to view. Please note that appliances and heating systems have not been tested and therefore no warranties can be given as to their working order. Energy Rating: C



**WETHERELL**  
MAYFAIR'S FINEST PROPERTIES

102 Mount Street • London • W1K 2TH  
T: 020 7529 5588 E: [rentals@wetherell.co.uk](mailto:rentals@wetherell.co.uk)

[wetherell.co.uk](http://wetherell.co.uk)

NO ONE KNOWS MAYFAIR BETTER THAN WETHERELL