

Red Lion Square, WC1R

£1,650,000

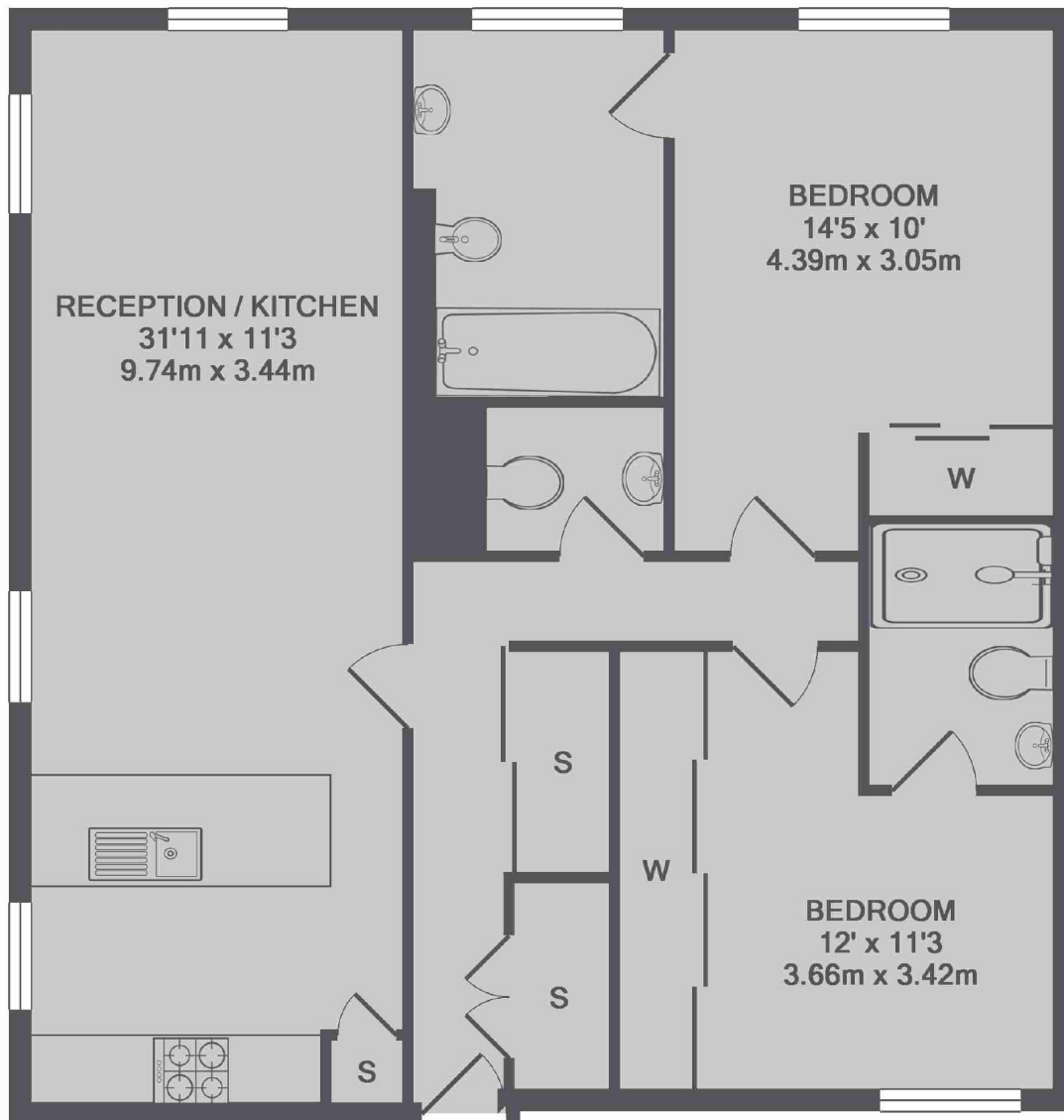
A uniquely refurbished, period two bedroom apartment in Halsey House, finished to an exceptionally high standard. Benefits include a large open plan living area providing natural lighting, ample storage and integrated appliances.

Located on one of London's most famous Historic Square's and in close proximity to London's most glamorous shopping, dining and financial districts. Holborn tube station is just a short walk away providing quick transport links via the Central and Piccadilly lines.

Features

- 10 Year Warranty
- Period Conversion
- Lift Access
- Parking Permit
- Bespoke Wardrobes
- Underfloor Heating

Red Lion Square, London, WC1R



TOTAL APPROX. FLOOR AREA 968 SQ.FT. (89.9 SQ.M.)

Contact

To arrange a viewing call our office on the number below or visit our website.



Energy Rating: . We aim to make our particulars both accurate and reliable. However they are not guaranteed; nor do they form part of an offer or contract. If you require clarification on any points then please contact us, especially if you're traveling some distance to view. Please note that appliances and heating systems have not been tested and therefore no warranties can be given as to their good working order.