



John Street, WC1N

£1,100 Per week

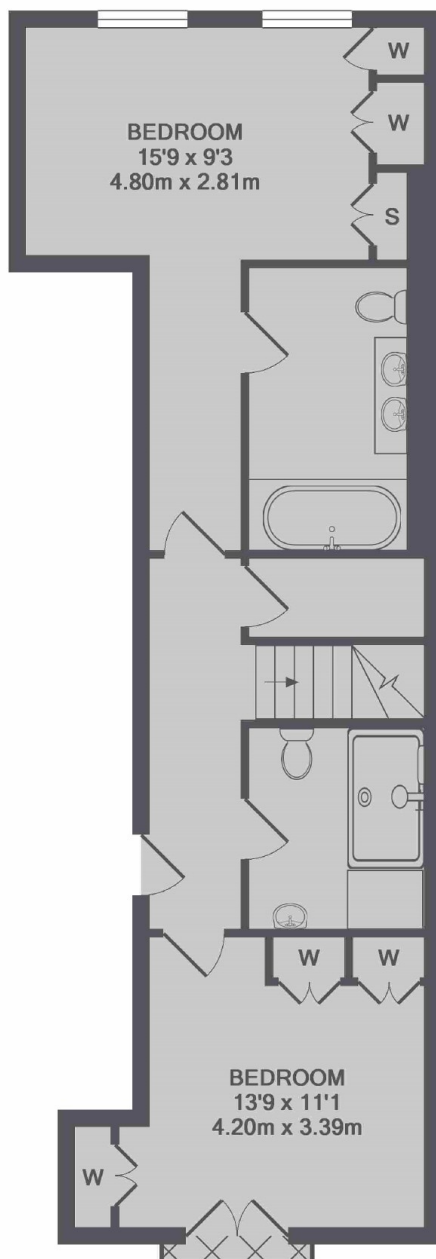
A newly renovated split level penthouse apartment set within this impressive Grade II listed Georgian house on one of the most sought after tree-lined streets in the heart of Bloomsbury.

Situated on one of the most fashionable residential streets in the West End the property is just moment's from the vibrant boutique shops, bars and restaurants on Lambs Conduit Street.

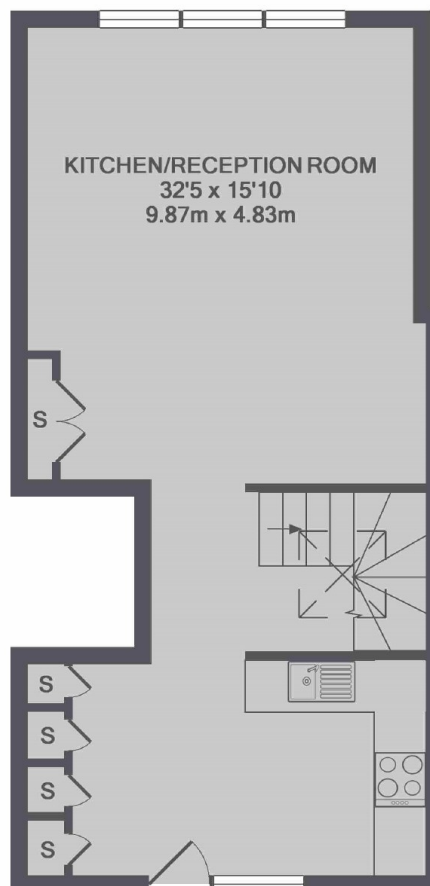
Features

- Penthouse Apartment
- Two Double Bedrooms
- Private Terrace
- Climate Cooling
- Underfloor Heating
- Excellent Transport Links

John Street, London, WC1N



GROUND FLOOR



1ST FLOOR

TOTAL APPROX. FLOOR AREA 1048 SQ.FT. (97.3 SQ.M.)

Dexters

Bloomsbury
55-56 Coram Street
London
WC1N 1HB
Lettings
020 7833 4488

Energy Rating: D. We aim to make our particulars both accurate and reliable. However they are not guaranteed; nor do they form part of an offer or contract. If you require clarification on any points then please contact us, especially if you're traveling some distance to view. Please note that appliances and heating systems have not been tested and therefore no warranties can be given as to their good working order.

 **RICS** | Regulated
Estate Agent
and Letting Agent

[dexters.co.uk](https://www.dexters.co.uk)