

LAMB'S CONDUIT STREET
BLOOMSBURY



Lamb's Conduit Street is a partly-pedestrianised stretch of Bloomsbury with a village feel. The street, which enjoys good transport links, has many amenities and boutique shops, including places to eat and drink, a deli, a grocers, a chemist, a florist, a doctor's surgery, a bookshop, and more. The Brunswick shopping centre nearby includes a large Waitrose and the Curzon Bloomsbury cinema.

An exceptional Grade II Listed Queen Anne home in one of Bloomsbury's most enviable locations. The property is arranged over four floors and retains many original features - including wood panelling, barley-twist balusters, and carved tread ends.

The private entrance reveals a 30ft tiled hallway with stairs leading to the first floor. There is a grand reception room with two full-length sash windows, a working fireplace, and period wooden flooring. Double doors lead to a dining room with fitted bookcases, a further fireplace, and sash window to the rear. A fitted kitchen completes the first floor accommodation. The principal bedroom on the second floor has an identical footprint to the main reception below, and includes two sash windows, a feature fireplace, and ornate cornicing. A further bedroom on the floor has fitted wardrobes, a sash window, a fireplace, and en suite bathroom. There are two further bedrooms on the third floor, plus a family bathroom and utility/laundry room.

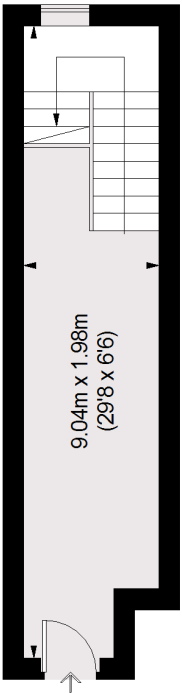


- Built In 1711
- Grade II Listed
- Many Original Features
- Own Private Entrance
- 2,000 Sq. Ft
- Queen Anne Residence

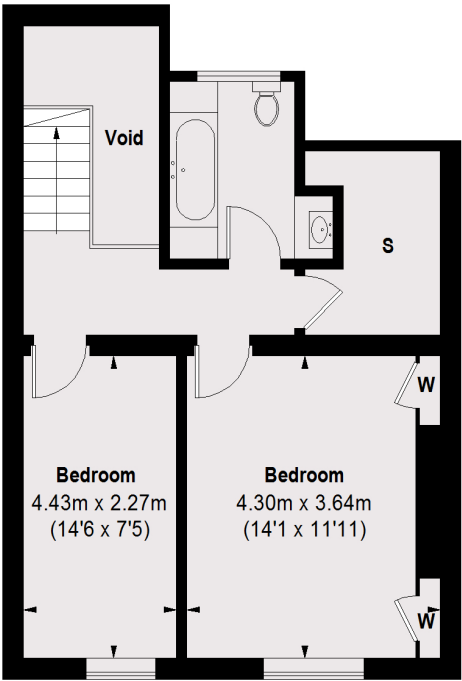




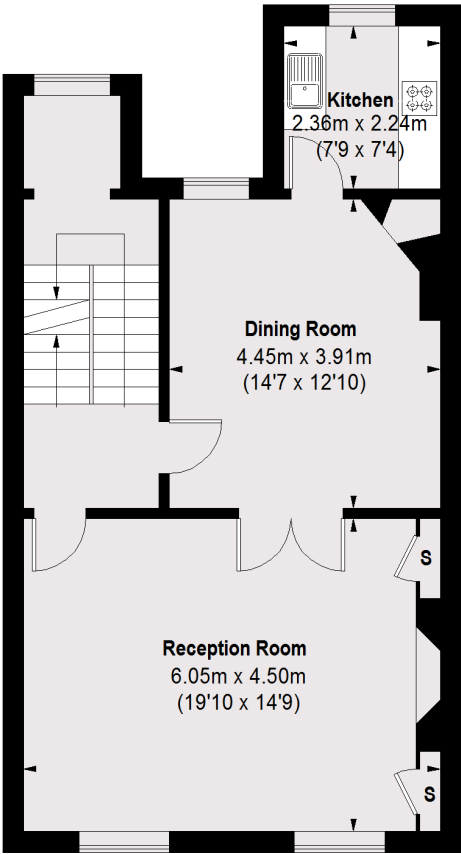
Lamb's Conduit Street, Bloomsbury
London, WC1N



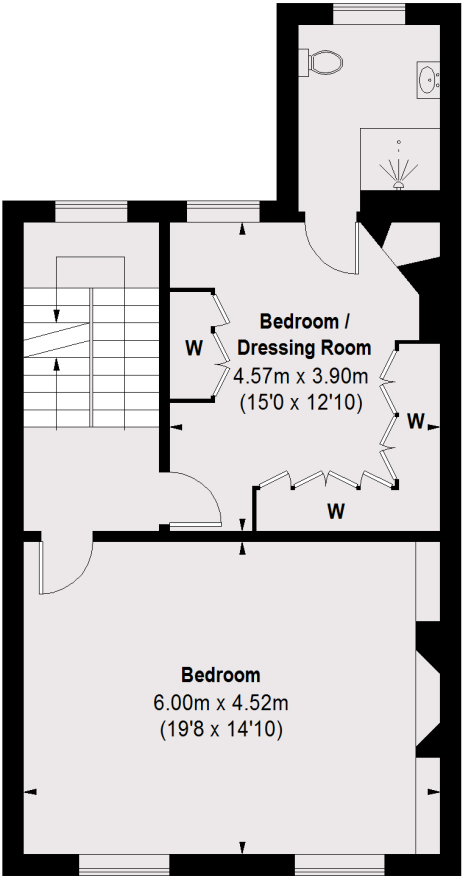
GROUND FLOOR



THIRD FLOOR



FIRST FLOOR



SECOND FLOOR



Dexters Bloomsbury
55-56 Coram Street,
London, WC1N 1HB
Sales
020 7833 4466

TOTAL APPROX. FLOOR AREA 1,993 SQ. FT 185.15 SQ. M)
We aim to make our particulars both accurate and reliable. However they are not guaranteed; nor do they form part of an offer or contract. If you require clarification on any points then please contact us, especially if you're traveling some distance to view. Please note that appliances and heating systems have not been tested and therefore no warranties can be given as to their good working order.



Price on application

Dexters

Bloomsbury
020 7833 4466

dexters.co.uk