

Russell Court, WC1H

£775,000

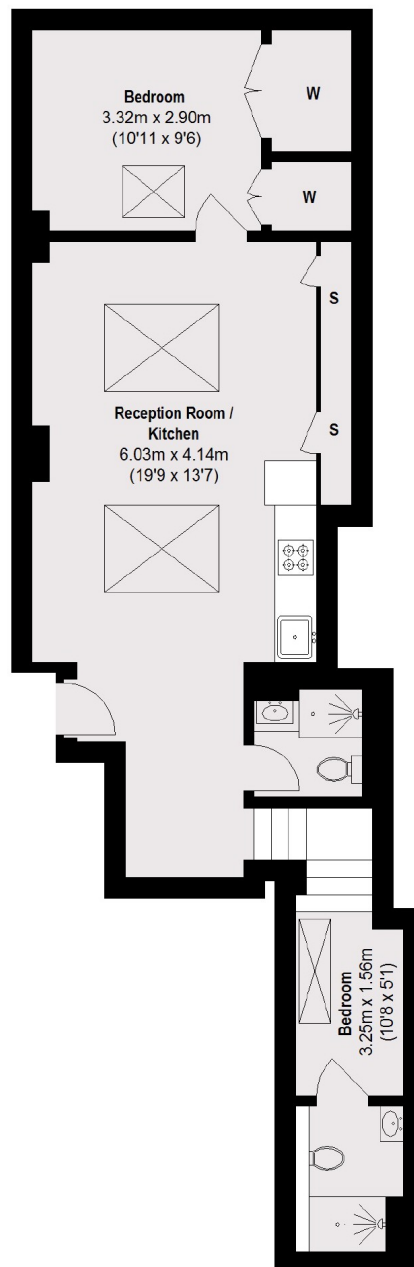
A truly unique two bedroom home in central Bloomsbury with bespoke interior design and a share of freehold. The property has a tranquil feel and well thought out design which incorporates great entertaining space and concealed storage.

Russell Court was built in the 1930's and occupies a prominent position close to Russell Square underground station. The area is surrounded by independent eateries, high street shops and gastro style restaurants.

Features

- Two Bedrooms
- Two Bathrooms
- 24 Hour Concierge
- Bespoke Interior Design
- Share Of Freehold
- Perfect Pied-a-Terre

Woburn Place, London, WC1H



Raised Ground Floor

Total area (approx.): 61.27 sq. m (660 sq. ft)

Contact

To arrange a viewing call our office on the number below or visit our website.



Energy Rating: D. We aim to make our particulars both accurate and reliable. However they are not guaranteed; nor do they form part of an offer or contract. If you require clarification on any points then please contact us, especially if you're traveling some distance to view. Please note that appliances and heating systems have not been tested and therefore no warranties can be given as to their good working order.