



John Street, WC1N

£3,500 Per week

Dexters



John Street, London, WC1N

Built-in 1820, this substantial Grade II listed six-bedroom Regency House is situated on this sought-after Bloomsbury street.

Having undergone an extensive restoration bringing it back to a beautiful family home with the added benefits of the latest 'eco friendly' technology. The property comprises of six double bedrooms, a large open planned dining area, two reception rooms, four bathrooms and a bespoke "Bulthaupt" kitchen.

The lower ground floor of the house can easily be used as a self-contained accommodation for either a live-in nanny or separate guest accommodation. There are also two fully tanked and lined vaults under the street for additional storage. A new roof terrace at the rear of the house provides a private outdoor space for dining and relaxing.

John Street is one of Bloomsburys' premier roads and is well serviced by numerous transport links including Chancery Lane (0.3 miles) Holborn (0.6 miles) and Russell Square (0.6 miles).

Features

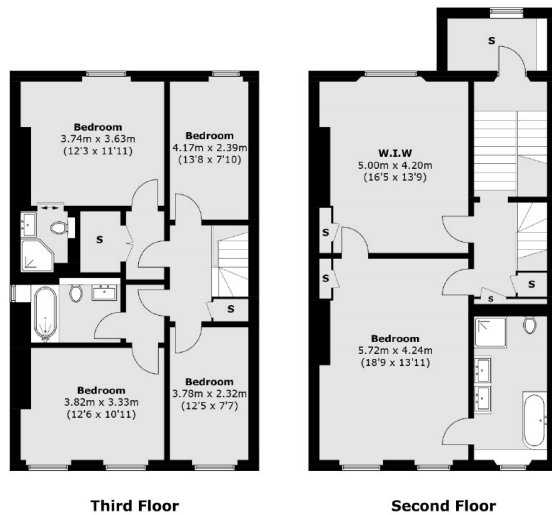
- Six Bedrooms
- Three Reception Rooms
- Four Bathrooms
- Grade II Listed Town House
- Roof Terrace
- Unfurnished







John Street, London, WC1N



Total area (approx.): 434.9 sq. m (4,681.0 sq. ft)
Terrace: 19.5 sq. m (209.8 sq. ft)

Dexters

Bloomsbury
55-56 Coram Street, London,
WC1N 1HB
Lettings
020 7833 4488

Energy Rating: B. We aim to make our particulars both accurate and reliable. However they are not guaranteed; nor do they form part of an offer or contract. If you require clarification on any points then please contact us, especially if you're traveling some distance to view. Please note that appliances and heating systems have not been tested and therefore no warranties can be given as to their good working order.

RICS | Regulated
Estate Agent
and Letting Agent

dexters.co.uk