



## Canal Reach, N1C

£1,039 Per week

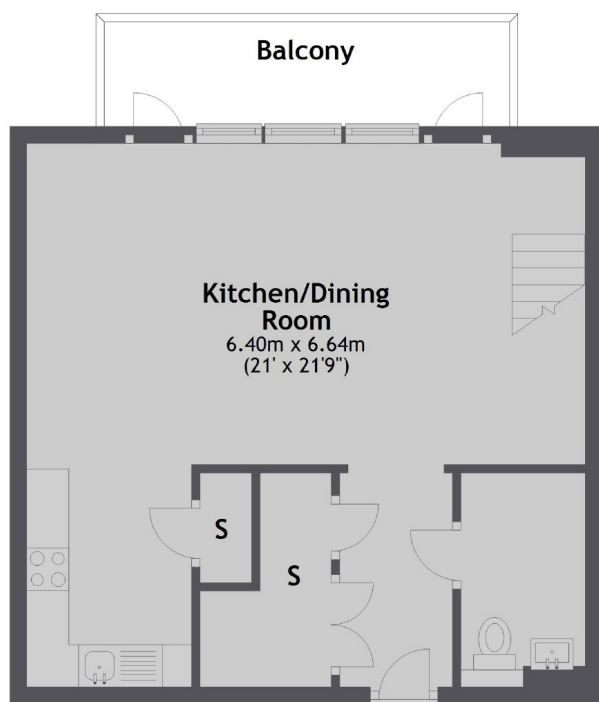
A modern two double bedroom apartment on the top floor of the Tapestry building with an on site gym & 24 hour concierge. The apartment is split over two levels with two bathrooms, modern open plan kitchen/living area & balcony.

The Tapestry Apartments are just a short walk from Kings Cross/St Pancras station providing convenient access for the Eurostar to Paris and Europe. It is next to the new Coal Drops Yard retail quarter with a vast amount of new shops, restaurants and facilities.

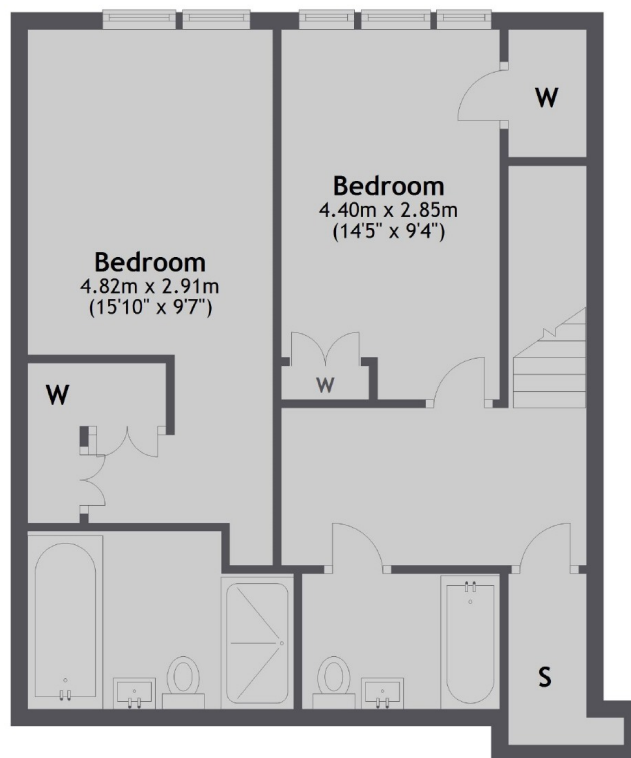
### Features

- Two Double Bedrooms
- Two Bathrooms
- Split Level
- Balcony
- 24 Hour Concierge & Gym
- Excellent Views

# Canal Reach, London, N1C



8TH FLOOR



9TH FLOOR

Total area: approx. 98.0 sq. metres (1055.4 sq. feet)