



## Caledonian Road, N1

£895,000

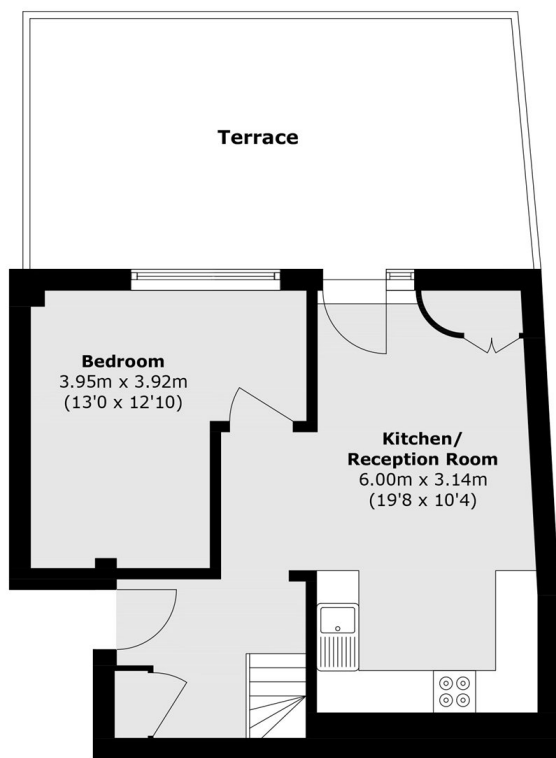
Located across the first and second floors, the accommodation comprises an open-plan kitchen/living area, three double bedrooms, a study, a family bathroom, and a large private terrace overlooking Regent's Canal. The property also includes private off-street parking.

Bridge Wharf sits beside Regent's Canal and offers modern riverside living close to King's Cross, Granary Square, cafés, creative spaces, and excellent transport links.

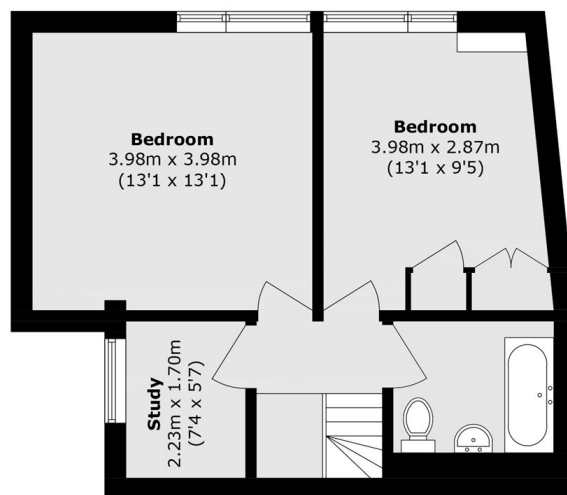
### Features

- Three Double Bedrooms
- Private Terrace
- Separate Study
- Off Road Parking
- Excellent Condition
- No Onward Chain

# Caledonian Road, London, N1



**First Floor**



**Second Floor**

Total area (approx.): 85.2 sq. m (917.0 sq. ft)  
Terrace area (approx.): 25 sq. m (269.1 sq. ft)