



Ontario Tower, E14

£750,000

Dexters



Fairmont Avenue, London, E14

Large two bedroom apartment in Ontario Tower with floor to ceiling windows and stunning views of the River Thames. Two double bedrooms, the property is approximately 1000 sq ft.

There is a large open reception/ dining room with curved floor to ceiling windows offering great views over the Thames and O2 Centre.

Both double bedrooms have built in storage and views of the Thames whilst the master bedroom has an en-suite.

The New Providence Wharf development has a 24hr concierge and access to a residents leisure complex including a gym and swimming pool.

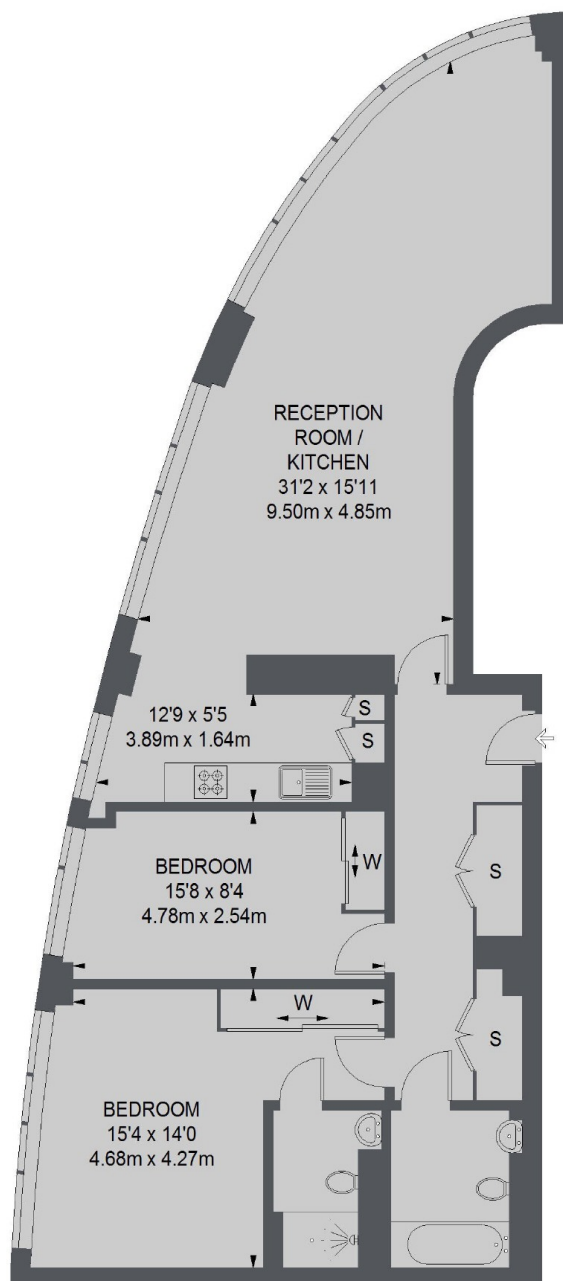
Walking distance to Blackwall DLR and within half a mile from Canary Wharf shops and restaurants

Features

1000 Sq ft
River Views
Floor To Ceiling Windows
Air Conditioning
Throughout
Use Of Radisson Spa
24 Hour Concierge



Fairmont Avenue, London, E14



THIRTEENTH FLOOR

TOTAL APPROX. FLOOR AREA
1076 SQ. FT. (99.93 SQ. M.)

Dexters

Canary Wharf
Regatta Point, 39 Westferry
Road, Docklands, London,
Sales
020 7517 1199

Energy Rating: C. We aim to make our particulars both accurate and reliable. However they are not guaranteed; nor do they form part of an offer or contract. If you require clarification on any points then please contact us, especially if you're traveling some distance to view. Please note that appliances and heating systems have not been tested and therefore no warranties can be given as to their good working order.

RICS | Regulated
Estate Agent
and Letting Agent

dexters.co.uk