



Violet Road, E3

£300 Per week

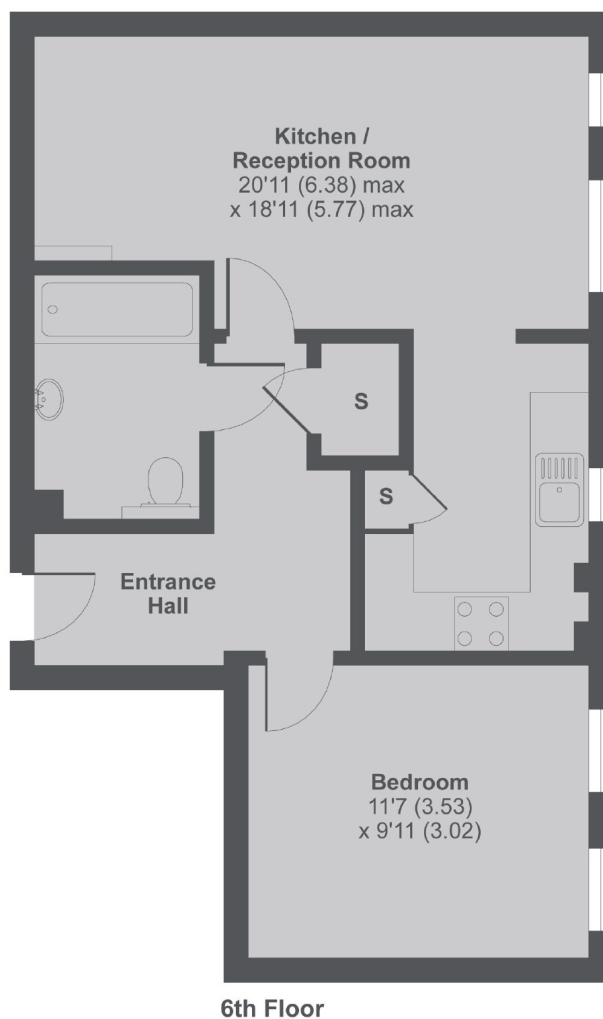
A modern one bedroom apartment on the sixth floor of this popular development. This bright and spacious property has floor to ceiling windows, an open plan kitchen and communal gardens.

Maestro Apartments is within walking distance of Devons Road and Langdon Park DLR stations, and within easy reach of Canary Wharf.

Features

- One Bedroom
- One Bathroom
- Sixth Floor
- Open Plan
- Concierge
- Ample Storage

Violet Road, London, E3



Violet Road, E14

MAIN HOUSE APPROX FLOOR AREA 526 SQ.FT 48.8 SQ.M

Copyright nichecom.co.uk 2017 Produced for Dexters REF : 201888

Contact

To arrange a viewing call our office on the number below or visit our website.



Energy Rating: C. We aim to make our particulars both accurate and reliable. However they are not guaranteed; nor do they form part of an offer or contract. If you require clarification on any points then please contact us, especially if you're traveling some distance to view. Please note that appliances and heating systems have not been tested and therefore no warranties can be given as to their good working order.