

Fairmont Avenue, E14

£280,000

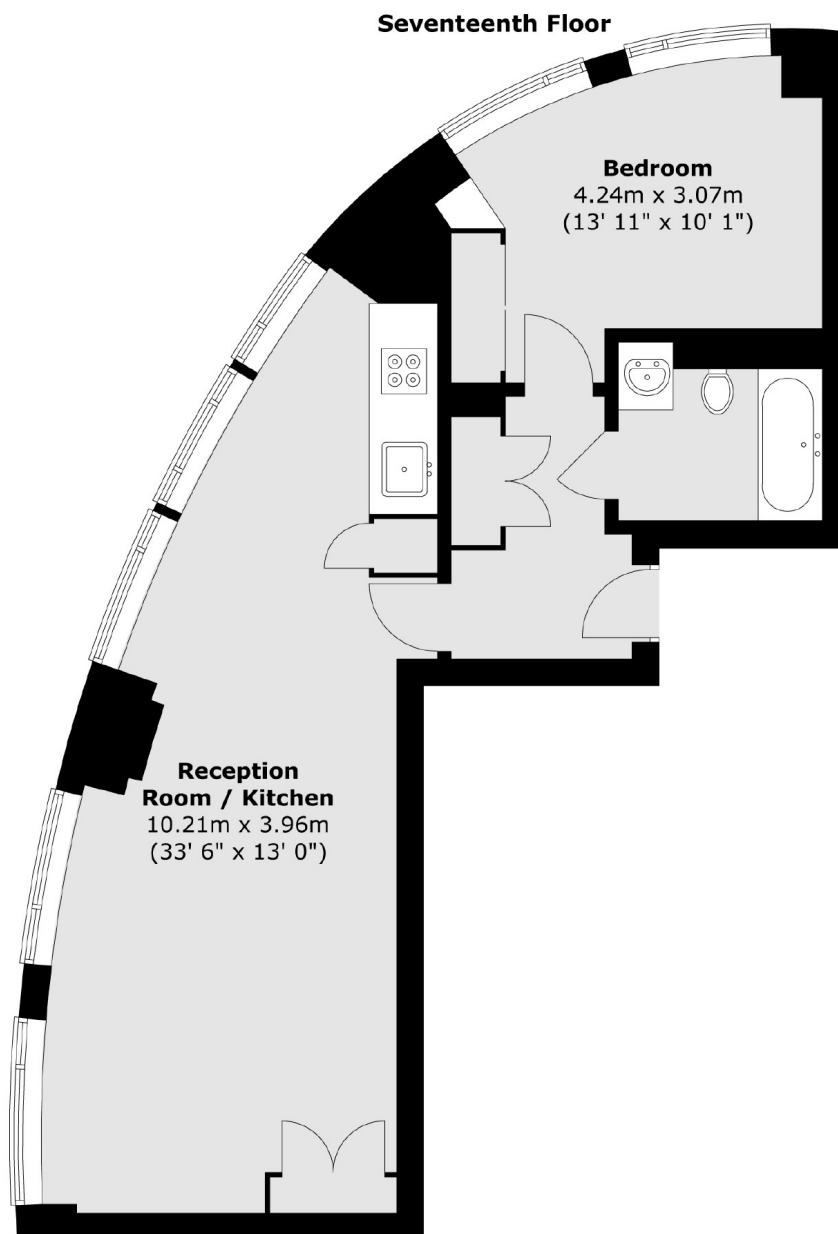
CASH BUYERS ONLY Located on the 17th floor and offering 642 sq.ft of living space is this one bedroom home. The property includes residents leisure facilities, concierge service, floor to ceiling windows and is offered with no onward chain.

Ontario Tower benefits from being close to both Blackwall and East India DLR stations which provides good links to the City and is walking distance to Canary Wharf for its abundance of shops, bars and restaurants.

Features

CASH BUYERS ONLY
642 sq.ft
17th Floor
Residents Facilities
Concierge Service
Sought After Development

Fairmont Avenue, London, E14



Total area (approx.) : 59.6 sq. m (642 sq. ft)

Dexters

Canary Wharf
39 Westferry Road
London
E14 8JH
Sales
020 7517 1199

Energy Rating: B. We aim to make our particulars both accurate and reliable. However they are not guaranteed; nor do they form part of an offer or contract. If you require clarification on any points then please contact us, especially if you're traveling some distance to view. Please note that appliances and heating systems have not been tested and therefore no warranties can be given as to their good working order.

 **RICS** | Regulated
Estate Agent
and Letting Agent

[dexters.co.uk](https://www.dexters.co.uk)