



Fairmont Avenue, E14

£280,000

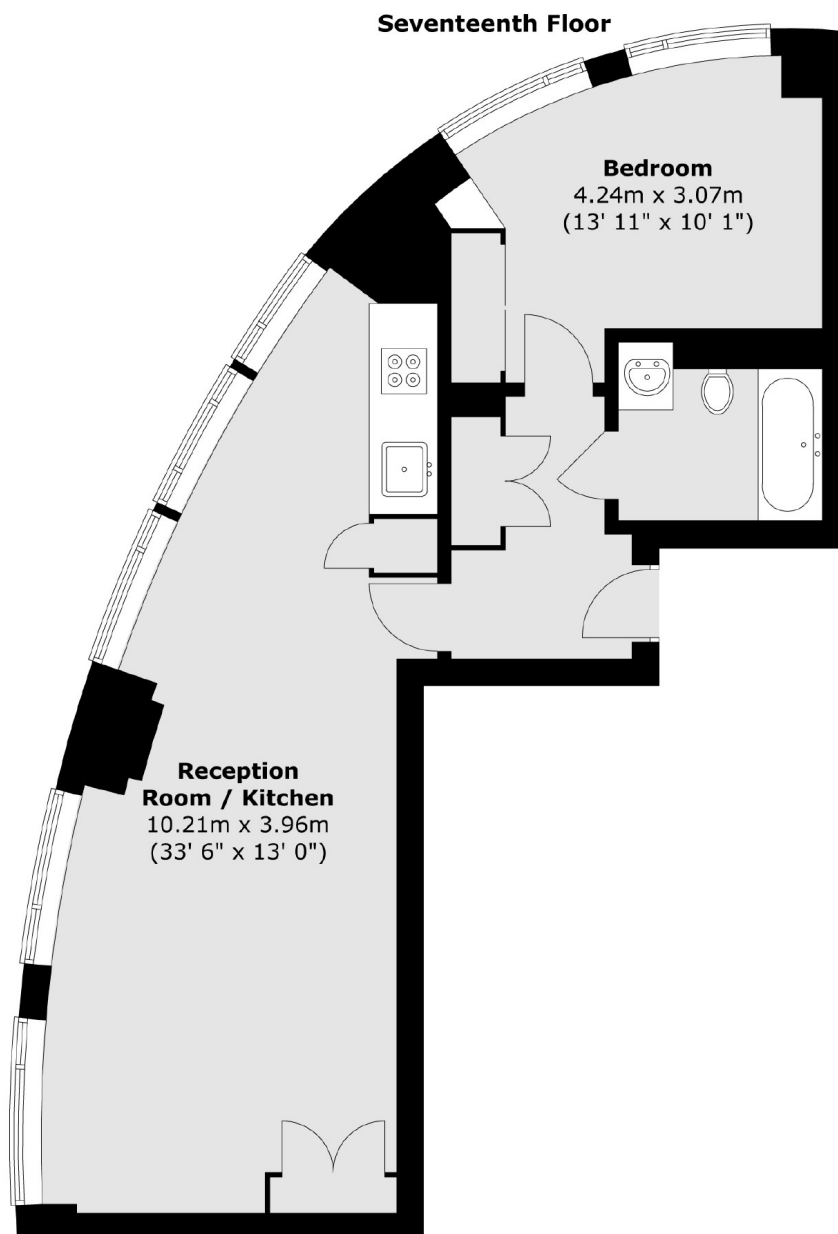
CASH BUYERS ONLY. Located on the 17th floor, this one-bedroom home offers 642 square feet of well-appointed living space. The property benefits from floor-to-ceiling windows, residents' leisure facilities, a concierge service, and is offered with no onward chain.

Ontario Tower enjoys a convenient location close to both Blackwall and East India DLR stations, offering excellent links to the City. Canary Wharf is also within walking distance, providing an abundance of shops, bars, and restaurants.

Features

CASH BUYERS ONLY
642 square feet
17th Floor
Residents Facilities
Concierge Service
Sought After Development

Fairmont Avenue, London, E14



Total area (approx.) : 59.6 sq. m (642 sq. ft)

Dexters

Canary Wharf
39 Westferry Road
London
E14 8JH
Sales
020 7517 1199

Energy Rating: B. We aim to make our particulars both accurate and reliable. However they are not guaranteed; nor do they form part of an offer or contract. If you require clarification on any points then please contact us, especially if you're traveling some distance to view. Please note that appliances and heating systems have not been tested and therefore no warranties can be given as to their good working order.

 **RICS** | Regulated
Estate Agent
and Letting Agent

[dexters.co.uk](https://www.dexters.co.uk)