



## Manchester Road, E14

£375,000

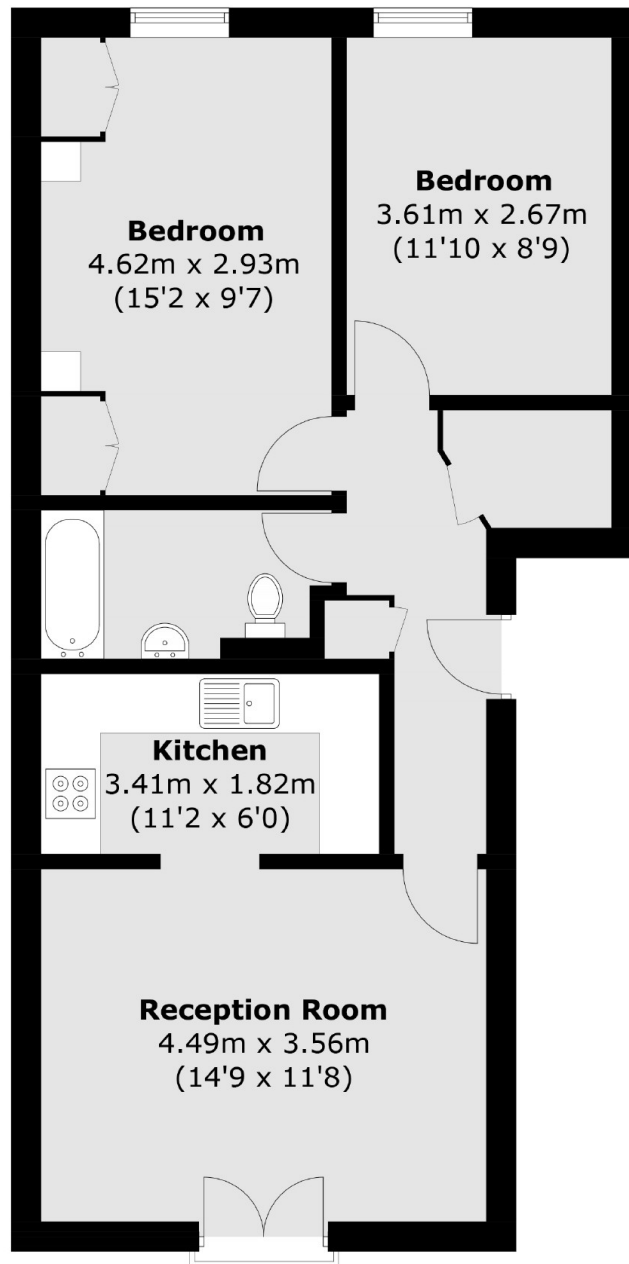
A two bedroom home ideally located for Canary Wharf and the Greenwich foot tunnel. The property has an open plan reception, garage, secure entry phone system, allocated garage and is offered with no onward chain.

Manchester Road is 0.4 miles away from Island Gardens DLR station, offering great links into Canary Wharf and the City. The Greenwich foot tunnel is also easily accessible.

### Features

- 648 Sq. Ft
- 900 Plus Year Lease
- Secure Entry Phone System
- Two Double Bedrooms
- Chain Free
- Low Service Charge

# Manchester Road, London, E14



Total area (approx.): 60.2 sq. m (648.0 sq. ft)