

## Prestons Road, E14

### £275,000

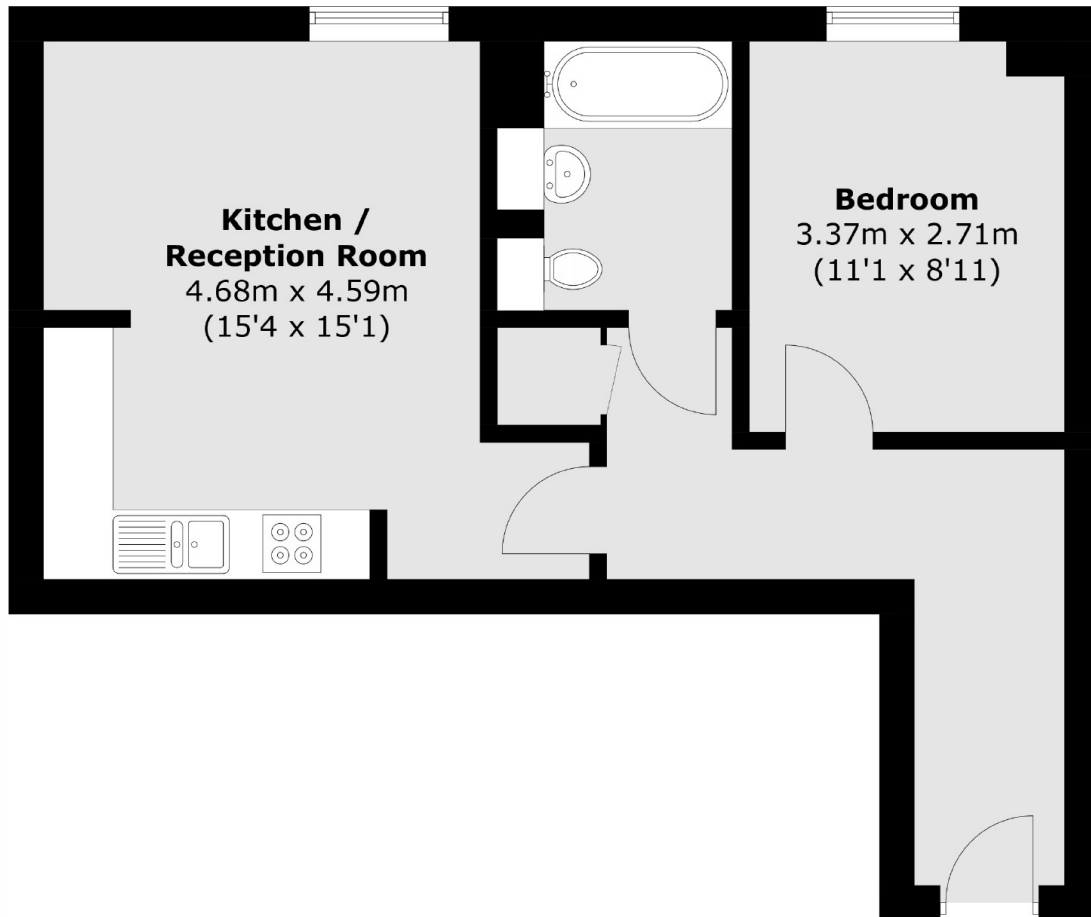
Offered to the market on a chain free basis is this one bedroom home ideally located for Canary Wharf. Features to include open plan reception room, 24 concierge service, secure entry phone system and low service charge.

Wharfside Point has great transport links being under three quarters of a mile from Canary Wharf and there are three DLR stations within a third of a mile away.

### Features

- 476 Sq.Ft
- Open Plan Reception Room
- 24 Houe Concierge Service
- EWS1 In Place
- Secure Entry Phone
- No Onward Chain

# Prestons Road, London, E14



Total area (approx.): 44.3 sq. m (476.8 sq. ft)

**Dexters**

Canary Wharf  
39 Westferry Road  
London  
E14 8JH  
Sales  
020 7517 1199

Energy Rating: C. We aim to make our particulars both accurate and reliable. However they are not guaranteed; nor do they form part of an offer or contract. If you require clarification on any points then please contact us, especially if you're traveling some distance to view. Please note that appliances and heating systems have not been tested and therefore no warranties can be given as to their good working order.

 **RICS** | Regulated  
Estate Agent  
and Letting Agent

[dexters.co.uk](https://www.dexters.co.uk)