



Schooner Close, E14

£380,000

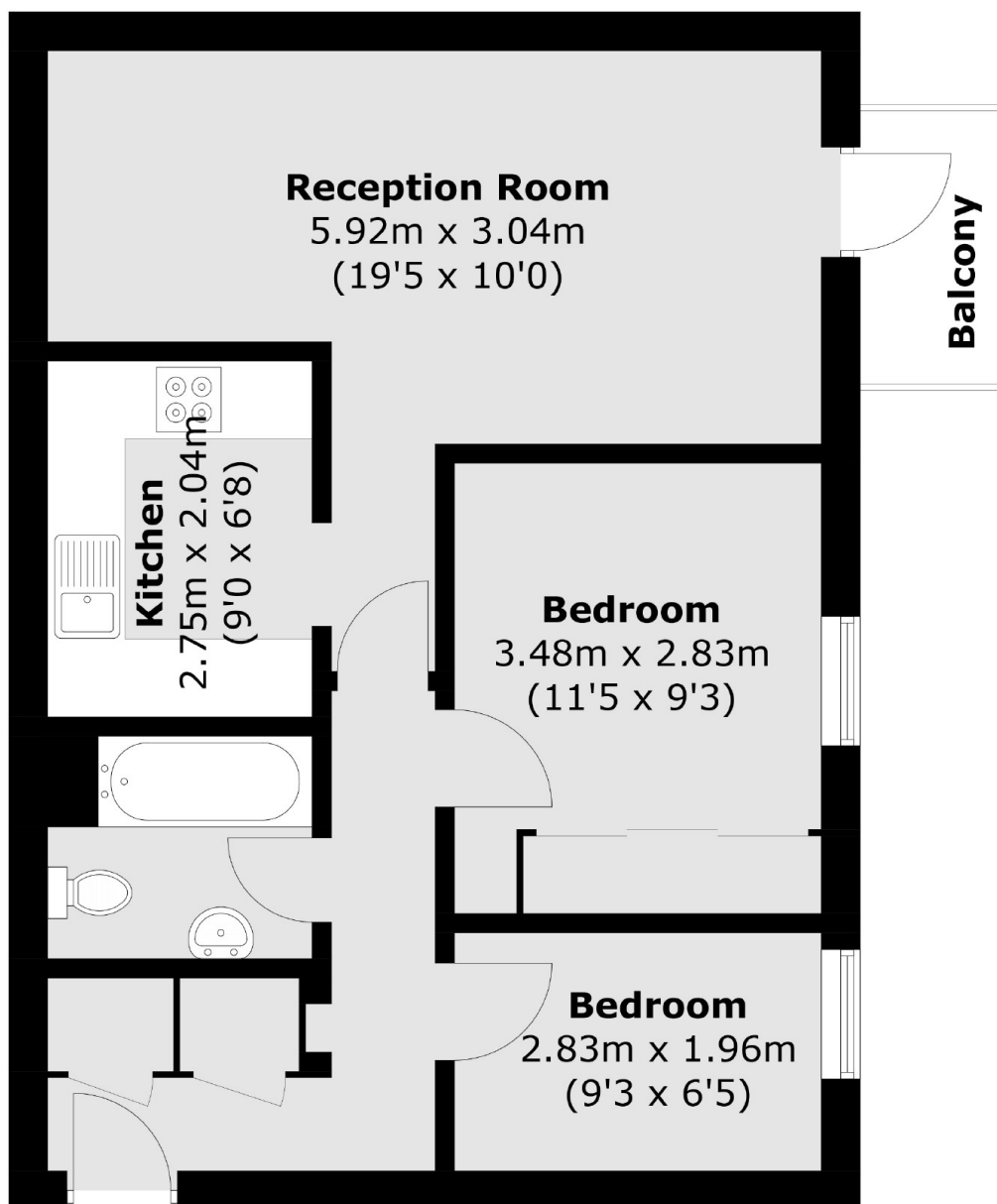
Nestled within a quiet cul-de-sac is this charming two bedroom home located on the top floor. The property includes a private balcony, 558 square feet, re-fitted kitchen, long lease, allocated parking.

Cadnam Lodge is ideally located for Canary Wharf, situated equidistant between Island Gardens and Crossharbour DLR Stations, both of which offer excellent links to the City and Canary Wharf.

Features

- 558 Square Feet
- 900 Plus Year Lease
- Re-Fitted Bathroom & Kitchen
- Two Bedrooms
- Secure Allocated Parking
- Private Balcony

Schooner Close, London, E14



Total area (approx.): 51.9 sq. m (558.6 sq. ft)
Balcony area (approx.): 2.3 sq. m (24.7 sq. ft)