



Westferry Road, E14

£275,000

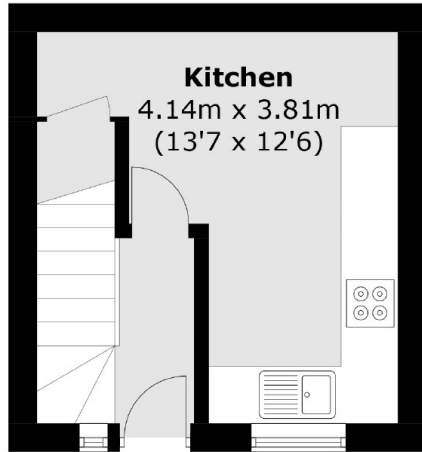
Located on the sought-after Westferry Road in E14, this charming one-bedroom home offers the perfect blend of independence and modern convenience. Boasting its own private entrance, this flat provides a rare sense of privacy, making it stand out from similar properties.

Westferry Road is just 0.4 miles from Mudchute DLR station, offering great links into the City and Canary Wharf.

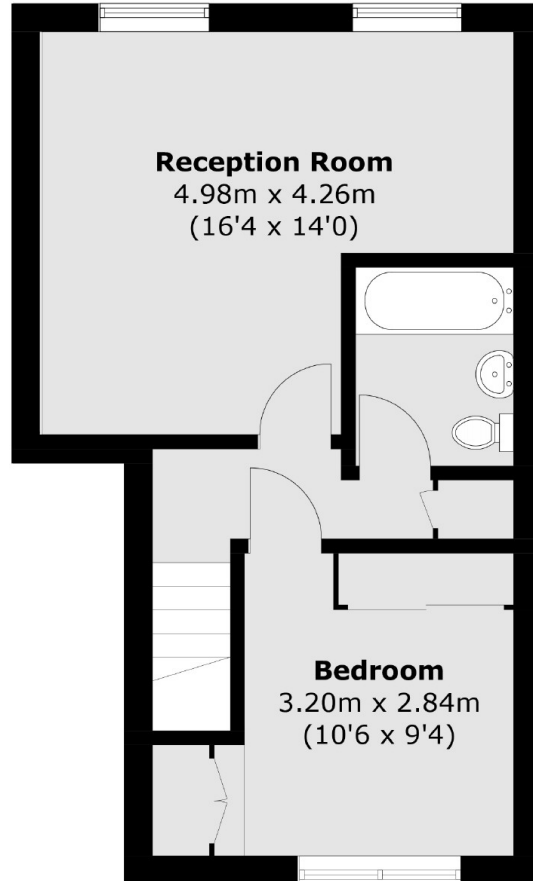
Features

- Private Entrance
- Gated Parking
- Share Of Freehold
- 580 Sq.Ft.
- Chain Free
- Excellent Location

Westferry Road, London, E14



Ground Floor



First Floor

Total area (approx.): 54.1 sq. m (582.3 sq. ft)