



Tweed Walk, E14

£380,000

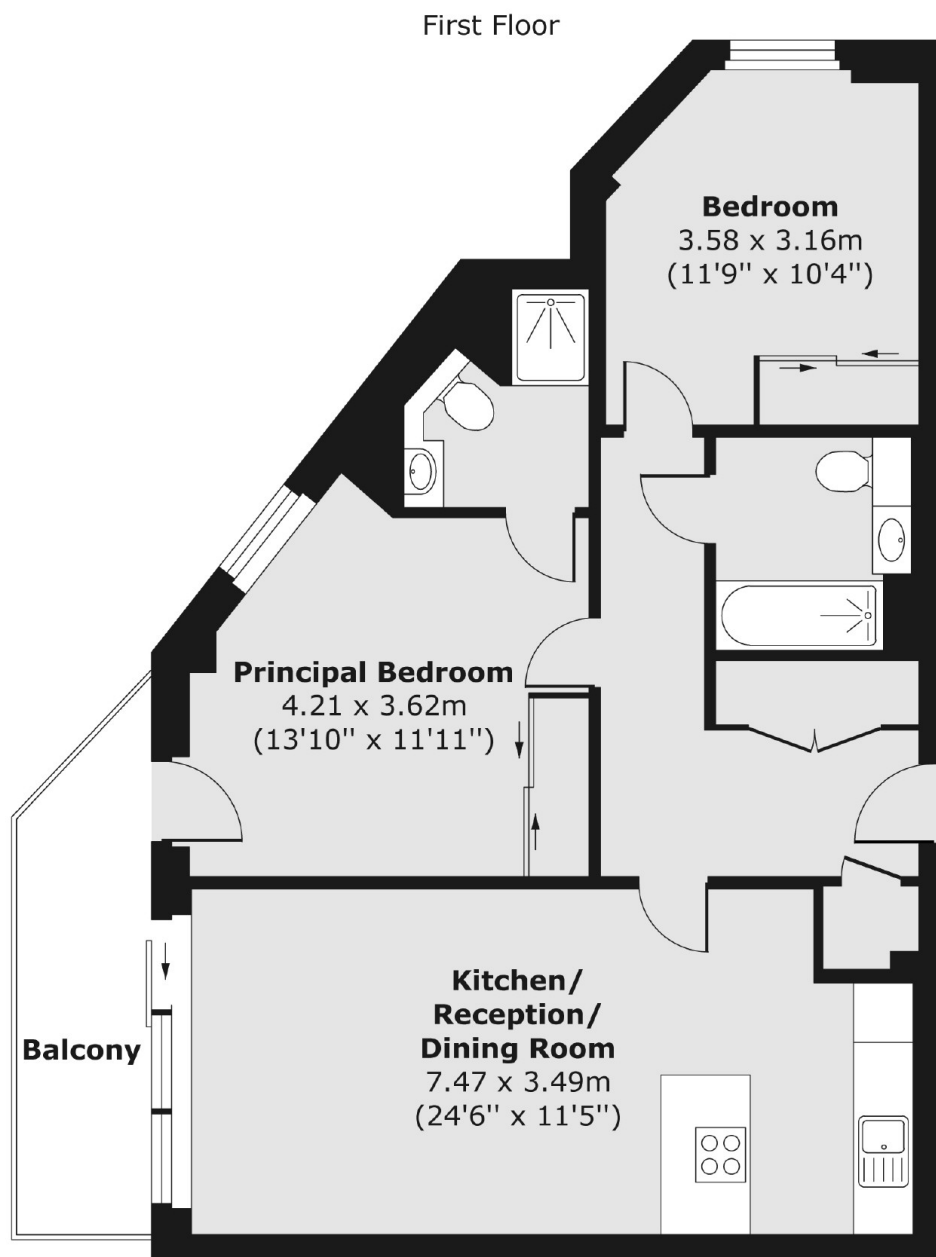
Boasting uninterrupted views of the canal, this two-bedroom, two-bathroom home also includes a long lease, an open-plan living area, and is being sold on a chain-free basis.

Yeoman Court is a modern development located close to Bromley-by-Bow station, offering easy access to both the City and Canary Wharf.

Features

- 767 Square Feet
- Two Bedrooms
- Canal Views
- Private Balcony
- Day Concierge
- Chain Free

Tweed Walk, London, E14



Total area (approx.) 71.22 sq. m (767 sq. ft)
Balcony area (approx.) 6.68 sq. m (72 sq. ft)