



High Street, E15

£350,000

Welcome to this contemporary one-bedroom home, perfectly designed for modern living. Enjoy the convenience of a 24-hour concierge service, your own private balcony, and an allocated parking space. The spacious open-plan kitchen and reception area provide a bright and airy atmosphere, ideal for relaxing or entertaining.

Pudding Mill DLR station is just 0.4 miles from River Heights, providing excellent transport links. Additionally, Westfield is only 0.7 miles away, offering a wide variety of shops and restaurants.

Features

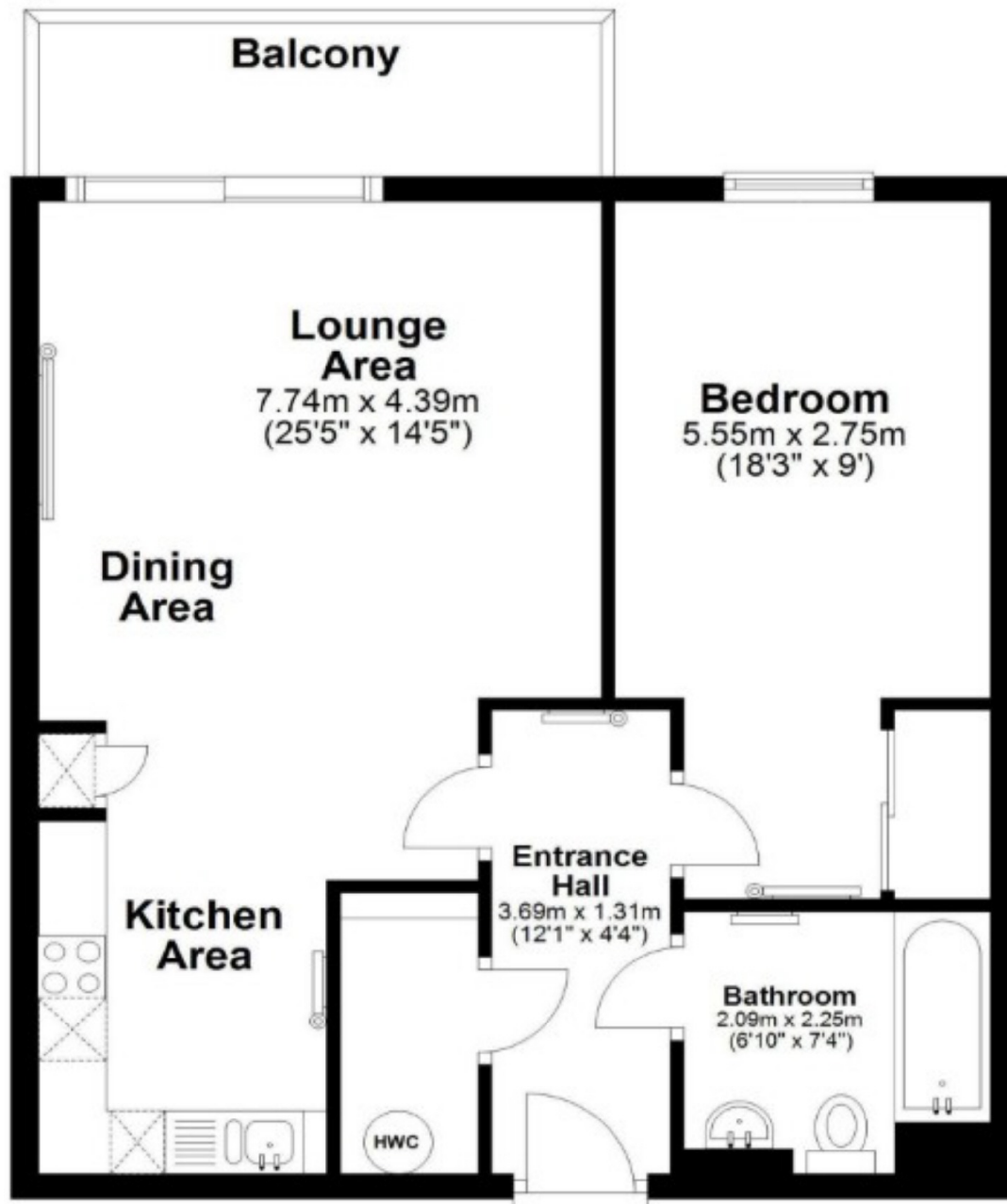
- Private Balcony
- 24 Hour Concierge
- Integrated Appliances
- Open Planned Reception
- Close To Station
- Allocated Parking Space

High Street, London, E15



Fourth Floor Apartment

Approx. 54.0 sq. metres (581.7 sq. feet)



Whilst every attempt has been made to ensure the accuracy of the floor plans, measurements of doors, windows and rooms are approximate and no responsibility is taken for any error, omission or mis-statement. The plans are for representation purposes only as defined by RICS Code of Measuring Practice and should be used as such by any prospective purchaser / tenant. The services, systems and appliances listed in this specification have not been tested by Oliver Rennalls or any representative of Oliver Rennalls and no guarantee as to their operating ability or their efficiency can be given. Copyright: Oliver Rennalls Date Prepared - Dec 2024

Dexters

Canary Wharf
39 Westferry Road
London
E14 8JH
Sales
020 7517 1199

Energy Rating: B. We aim to make our particulars both accurate and reliable. However they are not guaranteed; nor do they form part of an offer or contract. If you require clarification on any points then please contact us, especially if you're traveling some distance to view. Please note that appliances and heating systems have not been tested and therefore no warranties can be given as to their good working order.



dexters.co.uk