

Lincoln Plaza, E14

£490,000

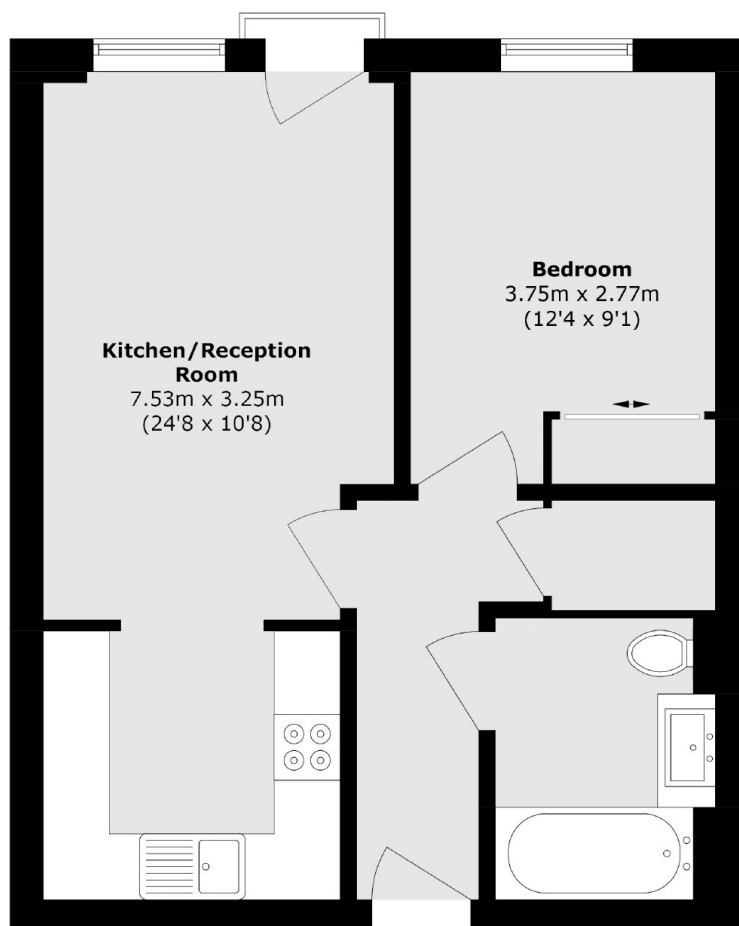
Offered to the market chain-free is this inviting one-bedroom apartment, located on the 27th floor. The property features an open-plan reception area, a 24-hour concierge service, residents' facilities, and access to a communal winter garden.

Lincoln Plaza is ideally located just 0.2 miles from South Quay DLR station, providing excellent transport links across the City.

Features

27TH Floor
Chain Free
24 Hour Concierge
Gym
Swimming Pool
Winter Garden

Lincoln Plaza, London, E14



Total area (approx.): 46.0 sq. m (495.1 sq. ft)